



NORTH CAROLINA

Department of Transportation



Project Atlas

Michelle Warf

NCDOT Environmental Analysis Unit



NCDOT Project ATLAS



Advancing **T**ransportation through **L**inkages, **A**utomation, and **S**creening

- What is ATLAS all about?

Overview of ATLAS background and tools

Webinar – February 25th and 26th

[EAU Connect Site](#)

Questions – Contact us

ATLAS@ncdot.gov

- What was driving the need for ATLAS?

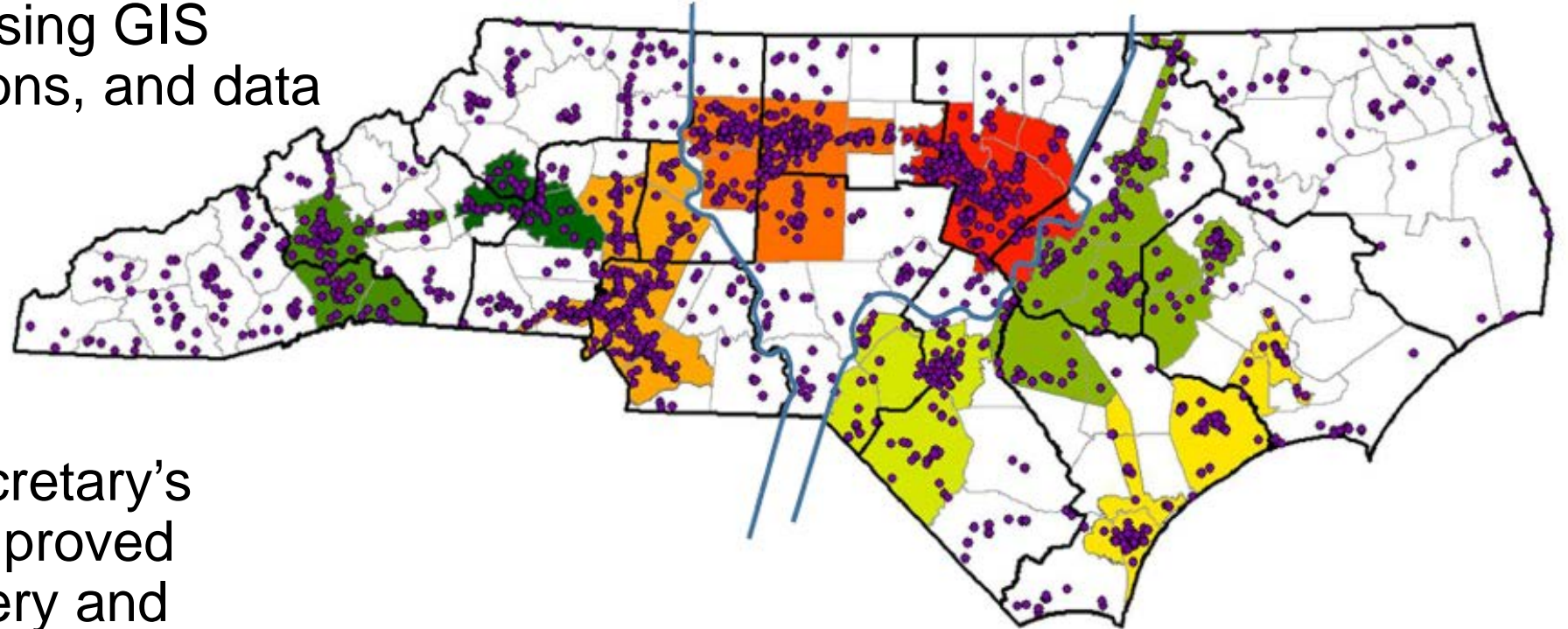


NCDOT Project ATLAS



Advancing **T**ransportation through **L**inkages, **A**utomation, and **S**creening

- Goal is to streamline project development using GIS tools, applications, and data



- Adheres to Secretary's Priorities for Improved Program Delivery and Reduced Cash Balance

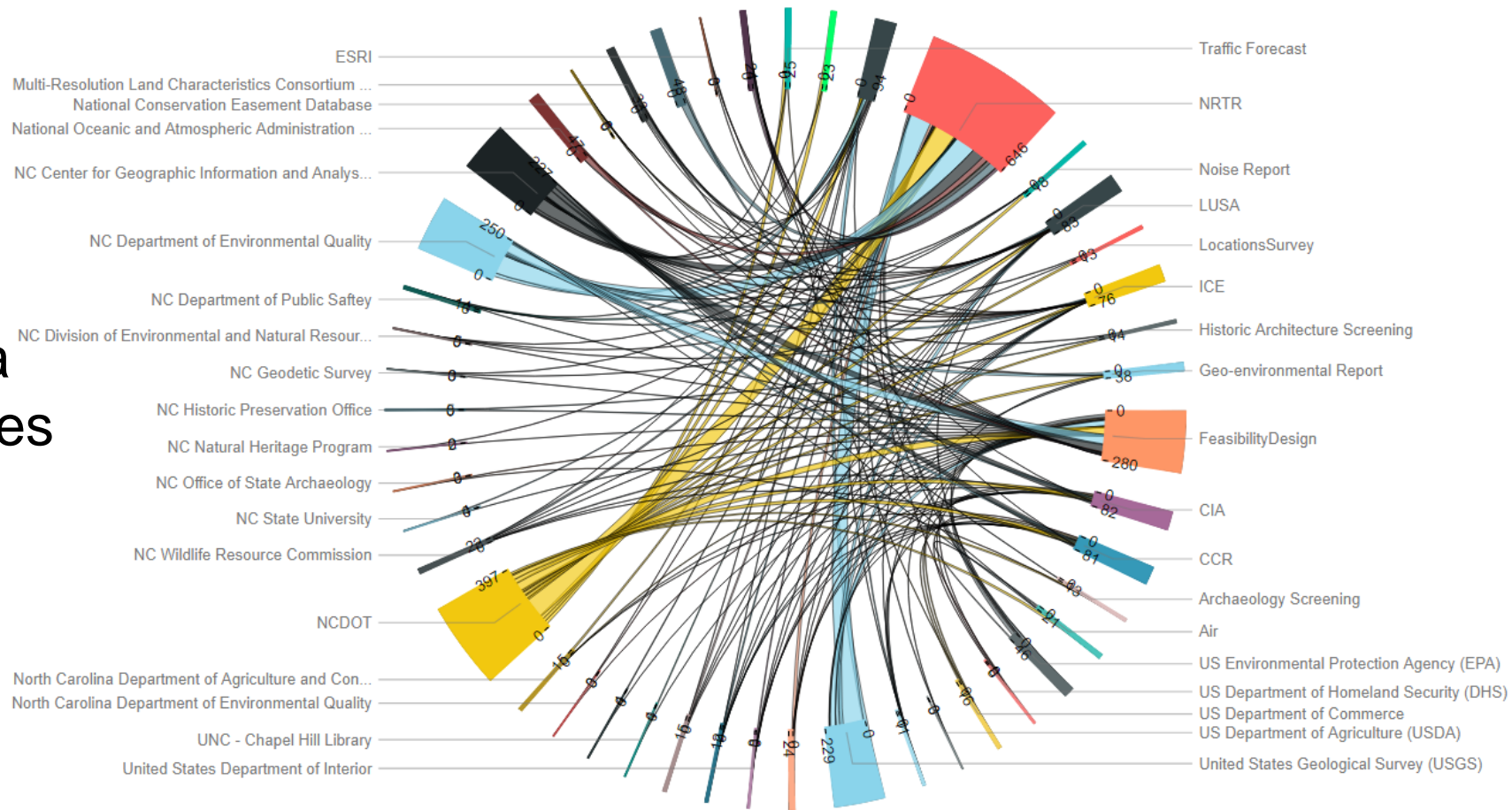


NCDOT Project ATLAS



Advancing Transportation through Linkages, Automation, and Screening

Data Sources



Data Uses



NCDOT Project ATLAS



Advancing **T**ransportation through **L**inkages, **A**utomation, and **S**creening



Name	Date modified	Type
R2501BC	4/1/2013 5:18 PM	File folder
R2501C	4/1/2013 5:18 PM	File folder
R2502A	4/1/2013 5:18 PM	File folder
R2502AB	4/1/2013 5:18 PM	File folder
R2502B	4/1/2013 5:18 PM	File folder
R2503	4/1/2013 5:18 PM	File folder
R2506	4/1/2013 5:18 PM	File folder
R2507	4/1/2013 5:18 PM	File folder
R2507A	4/1/2013 5:18 PM	File folder
R2510	4/1/2013 5:18 PM	File folder
R2510A	4/1/2013 5:18 PM	File folder
R2510B	4/1/2013 5:18 PM	File folder
R2510c	4/1/2013 5:18 PM	File folder
R2510WM	4/1/2013 5:18 PM	File folder
R2511	4/1/2013 5:18 PM	File folder
R2513A	1/22/2018 3:53 PM	File folder
R2514a	4/1/2013 5:18 PM	File folder
R2514B	9/7/2017 4:10 PM	File folder



Linkages

Where are the data used for that project?



NCDOT Project ATLAS



Advancing **T**ransportation through **L**inkages, **A**utomation, and **S**creening

Screening
What do we know about this project?





NCDOT Project ATLAS



Advancing **T**ransportation through **L**inkages, **A**utomation, and **S**creening

- *Automation*

Isn't there a better way to do this report?





NCDOT Project ATLAS



Advancing Transportation through Linkages, Automation, and Screening

▼ R-2721 - SOUTHERN WAKE FREEWAY	37673
▼ PE	37673.1
▼ R-2721 - PE - SOUTHERNWAKE FREEWAY NC	37673.1.TA1
▼ SCHEDULE HISTORY	SCHEDULE HISTORY
▼ R-2721 Project Team Assignment	37673.1.TA1.4
▼ R-2721 Project Team Assignment	9806467
▼ NCTA	9806467 0004
▼ Project Manager	9806467 0004 3020
▼ Division	9806467 0024
▼ Division Engineer	9806467 0024 3110
▼ PLANNING ALSO INCL. R-2828 & R-2829	37673.1.TA1.5
▼ R-2721 PLANNING (New Location)	37673.1.TA1.6
▼ R-2721 PLANNING (New Location)	11024444
▼ Public Meeting On Alternatives	11024444 0060
▼ Public Meeting (PM)	398455
▼ Draft Environmental Document	11024444 0170
▼ Draft EIS Approved (DEIS)	398492
▼ DEIS Review & Public Hearings	11024444 0190
▼ Corridor Design Public Hearing (CDPH)	398495
▼ Post Hearing Meeting (PHM)	398498
▼ Alternative Selected (ALTSEL)	398523
▼ Final Environmental Document	11024444 0230
▼ Traffic Forecast Completed (TFC)	532806
▼ Updated Capacity Analysis Comp.	532808
▼ Final EIS Approved (FEIS)	398508
▼ Impact Minimization Meeting	532813
▼ Quantitative LUSA/ICI	532807
▼ Biological Assessment (BA)	532811
▼ Preliminary Design Submittal (PDS)	532809
▼ Biological Opinion (BO)	532812
▼ Design Noise Report (DNR)	532810
▼ Comprehensive Arch. Survey (C_ARCHSVY)	534761
▼ Record of Decision (ROD)	11024444 0240
▼ Design Public Hearing (DPH)	532804

Detail: Overview(s):

Basic NCDOT Text Control Admin Superior User Fields Dates

Proj.type: [dropdown] Short ID: 37673.1

Proj. summarization

Status	System	User sta	Respons	Pers.Re	Applicar	Resp. c	Req.cos
	37673	R-2721 - SOUTHERN WAKE FRE					
	37673.1	PE					
	37673.1.TA1	R-2721 - PE - SOUTHERNWAKE FF					
	37673.1.TA1.4	R-2721 Project Team Assignmen					
	9806467 / 0004	NCTA					
	9806467 / 0004 >302	Project Manager					
	9806467 / 0024	Division					
	9806467 / 0024 >311	Division Engineer					
	37673.1.TA1.5	PLANNING ALSO INCL. R-2828 &					
	37673.1.TA1.6	R-2721 PLANNING (New Location)					
	11024444 / 0060	Public Meeting On Alternatives					
	11024444 / 0170	Draft Environmental Document					
	11024444 / 0190	DEIS Review & Public Hearings					
	11024444 / 0230	Final Environmental Document					
	11024444 / 0240	Record of Decision (ROD)					

How do I know what has been completed on my project?



NCDOT Project ATLAS



Advancing **T**ransportation through **L**inkages, **A**utomation, and **S**creening

Search Tool



NCDOT Project ATLAS



Advancing **T**ransportation through **L**inkages, **A**utomation, and **S**creening



ATLAS Search Tool

[About](#)

[Additional Resources](#)

[Help](#)

Search

What Data Are You Searching For?

Search By Document ⓘ

Search By Organization ⓘ

Search By Keyword ⓘ

Search

Clear



NCDOT Project ATLAS



Advancing **T**ransportation through **L**inkages, **A**utomation, and **S**creening

237 Layers Found.

Select	Layer Name	Description	Owner
<input checked="" type="checkbox"/>	2012 Integrated Reporting Water Quality Assessments	This data set contains the detailed water quality assessment for the 3,381 waterbodies in North Carolina where assessment data or information were available. The data assessed were from over 5,000 monitoring stations with data and information mostly collected in calendar years 2006-2010. This data set includes parameters assessed and water quality rating.	NC Department of Environmental Quality, Division of Water Resources
<input checked="" type="checkbox"/>	303d and 305b Streams (ESM Layer)	303d and 305b Streams for ESM application hosted by NCDOT.	NCDOT, GIS Engineering Transportation Systems, GIS Unit
<input type="checkbox"/>	Albemarle - Pamlico National Estuary Partnership Map	AP map is an interactive mapping application designed to provide geographic information about the Albemarle-Pamlico (A-P) watershed and APNEP.	NC Department of Environmental Quality, Albemarle-Pamlico National Estuary Partnership
<input checked="" type="checkbox"/>	Alluvial Fans	Location and attributes of alluvial fan studies. Only the 1-percent-annual-chance flood is mapped for alluvial fans. The alluvial fan could be mapped as: Zone AO areas with depths and velocities; Zone AO areas with just depths; or Zone A, AE, or X. This information is needed for the Summary of Alluvial Fan Analyses and Results of Alluvial Fan Analyses tables in the FIS report.	Department of Homeland Security, Federal Emergency Management Agency
<input checked="" type="checkbox"/>	Anadromous Fish Spawning Areas	NC DEQ maps here: http://portal.ncdenr.org/web/mf/afsa-maps	NC Department of Environmental Quality, Division of Marine Fisheries

Use checkboxes to select data sets you would like to Download or View on Map, then hit Download or View on Map button. You will then be prompted to define your geographic area of interest.

Download or View On Map



NCDOT Project ATLAS



Advancing **T**ransportation through **L**inkages, **A**utomation, and **S**creening



ATLAS Search Tool

[About](#)

[Additional Resources](#)

[Help](#)

[Search Home](#) » [Area of Interest](#)

Define Your Area of Interest

The next step is to define your geographic Area of Interest. You can do this by:

- Uploading a boundary of your project study area.**
- Select a pre-defined boundary.

Upload Your Geometry [?]

Upload

Verify

Download



View On Map



NCDOT Project ATLAS



Advancing **T**ransportation through **L**inkages, **A**utomation, and **S**creening

ATLAS Search Tool

About Additional Resources Help

Search Home Area of Interest Map View

Layers Base Maps Measurement

Layers

- Flood Hazard Zones
 - Legend Opacity
 - 1% Annual Chance Flood Hazard
 - Regulatory Floodway
 - Special Floodway
 - Area of Undetermined Flood Hazard
 - 0.2% Annual Chance Flood Hazard
 - Future Conditions 1% Annual Chance Flood Hazard
 - Area with Reduced Risk Due to Levee
- Flood Hazard Boundaries
 - Legend Opacity
 - Limit Lines
 - SFHA / Flood Zone Boundary
 - Other Boundaries

© 2018 - North Carolina Department of Transportation

ATLAS Search Tool

About Additional Resources Help

Search Home Area of Interest Map View

Layers Base Maps Measurement

Base Maps

- Imagery
- Imagery with Labels
- Streets
- Topographic
- Dark Gray Canvas
- Light Gray Canvas
- National Geographic
- Terrain with Labels
- Oceans
- OpenStreetMap
- USA Topo Maps
- USGS National

© 2018 - North Carolina Department of Transportation



NCDOT Project ATLAS



Advancing **T**ransportation through **L**inkages, **A**utomation, and **S**creening

Screening Tool



NCDOT Project ATLAS



Advancing **T**ransportation through **L**inkages, **A**utomation, and **S**creening



ATLAS Screening Tool

[About](#)

[Additional Resources](#)

[Help](#)

Welcome to the Project Development Screening Tool

In order to screen a project study area, you need to complete a few steps:

1. Build Your Study Area
2. Buffer Your Study Area (optional)
3. Select Data to Screen
4. View, Download, and/or Share Your Screening Report

To begin: How would you like to build your Project Study Area?

1

By Project ID

Select if you know your STIP or SPOT ID for the project you are screening.

2

Upload Study Area

Select if you have a study area boundary in .zip format.

3

Draw Study Area

Select if you would like to build your study area using draw tool.



NCDOT Project ATLAS



Advancing **T**ransportation through **L**inkages, **A**utomation, and **S**creening

About Additional Resources Help

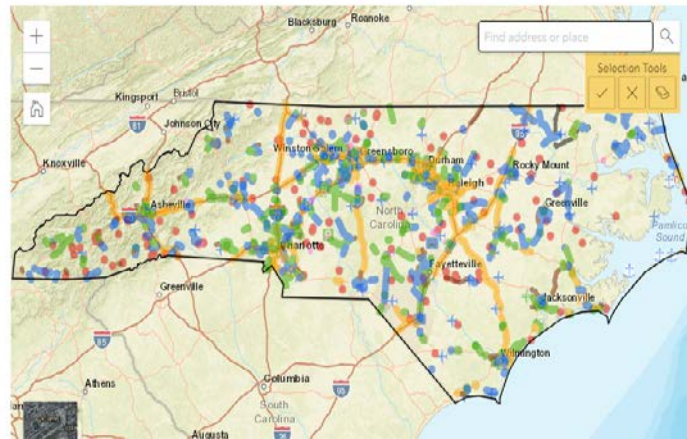
Screening Home > Screen By Project ID

Screen By Project ID

Utilize the Project ID Search and/or select your project from the map with the map Selection Tools. Only projects highlighted on the map will be included in your Study Area when you click Next.

Enter STIP or SPOT ID

Ex. STIP ID: I-4914, Ex. SPOT ID: H141398

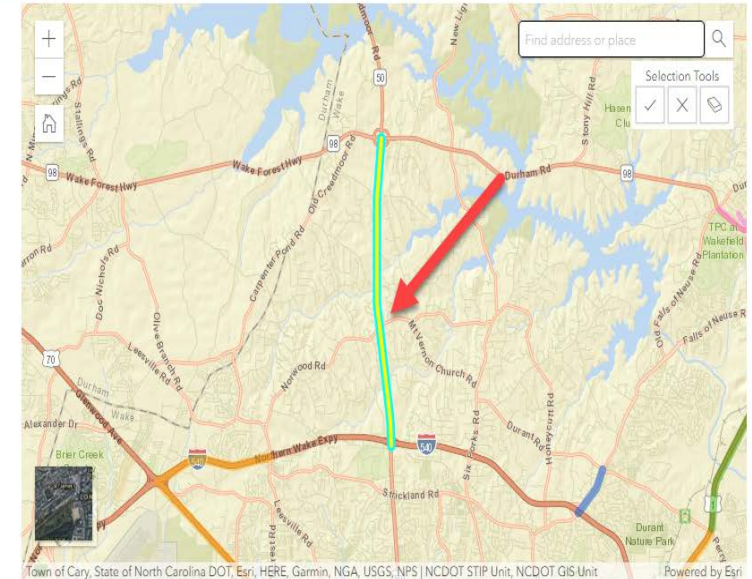


Utilize the Project ID Search and/or select your project from the map with the map Selection Tools. Only projects highlighted on the map will be included in your Study Area when you click Next.

Enter STIP or SPOT ID

Ex. STIP ID: I-4914, Ex. SPOT ID: H141398

U-5891



Town of Cary, State of North Carolina DOT, Esri, HERE, Garmin, NGA, USGS, NPS | NCDOT STIP Unit, NCDOT GIS Unit

Powered by Esri



NCDOT Project ATLAS



Advancing **T**ransportation through **L**inkages, **A**utomation, and **S**creening

Buffers are required to be:

1. Applied for point and line features
2. No more than 2 miles

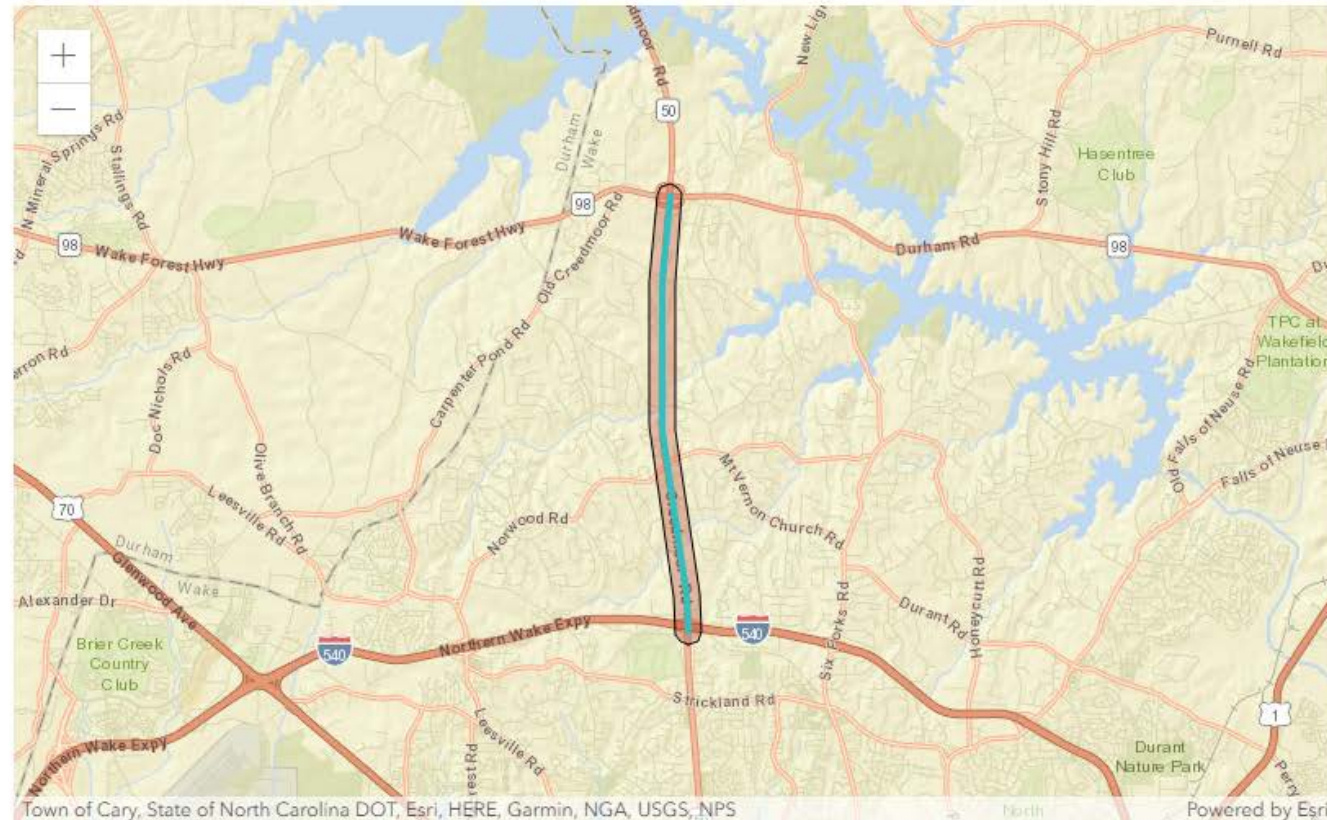
Buffers are optional for polygon features.

Distance

Unit

Feet

Buffer



Back

Next



NCDOT Project ATLAS



Advancing **T**ransportation through **L**inkages, **A**utomation, and **S**creening

Select the data sets against which you would like to screen your project. Use check boxes to add layers to your screening. Click the layer name to preview the layer on the map, view layer information, or set sub-report fields for specific layers.

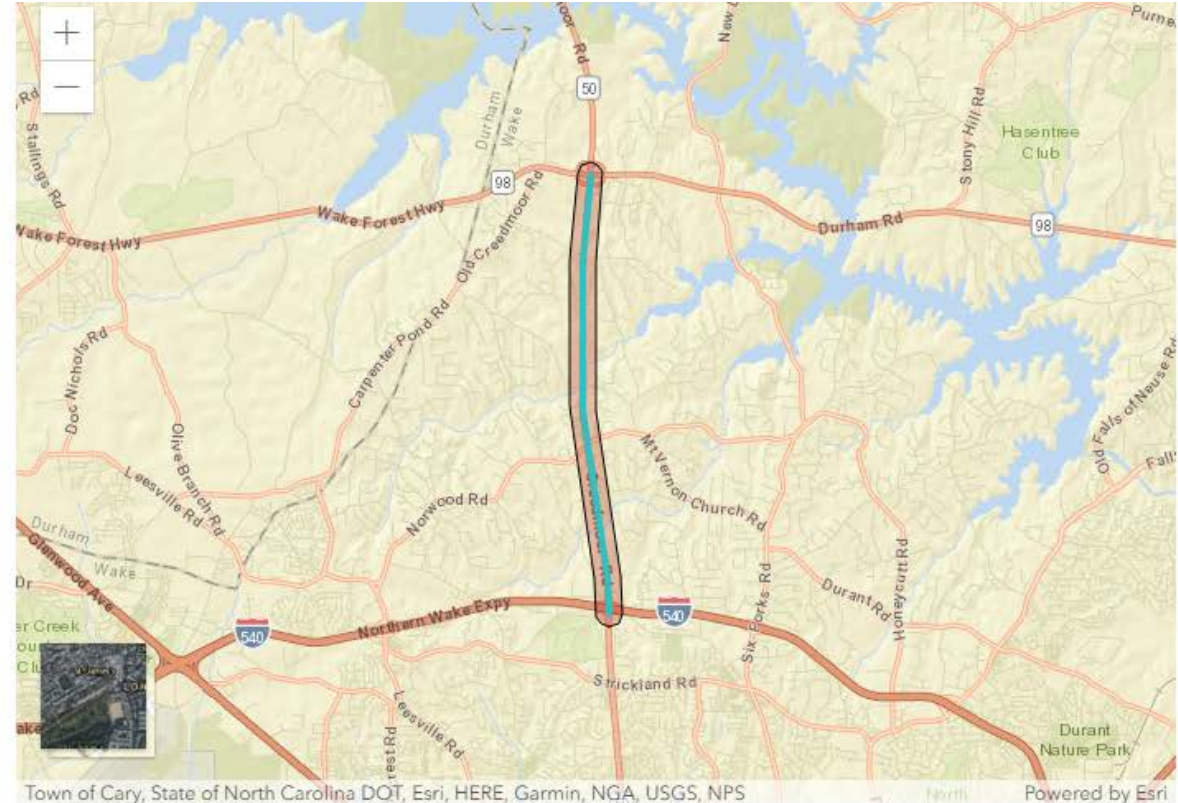
Layer Information ⓘ Set Field ⓘ

Search by layer name

- Human Environment
- Natural Environment
- Conservation Area
- Critical Areas (ESM Layer)
- National Conservation Easement Database
- National Wildlife Refuges (>3M)
- NC CAMA Counties (DCM List)
- NC DEQ DCM Coastal Reserve Boundary

Back

Next





NCDOT Project ATLAS



Advancing **T**ransportation through **L**inkages, **A**utomation, and **S**creening

information, or set sub-report fields for specific layers.

Layer Information

Search by layer name

- NC Geology
- NCDOT SSURGO Soils
- NRCS Hydric Soils
- NRCS Prime Farmland Soils
- US EPA Level III Ecoregions
- US EPA Level IV Ecoregions
- Threatened and Endangered
- Utilities

Back

Next

Set field for 'NCDOT SSURGO Soils'

- MUSYM
- MUKEY
- muname
- hydgrpdc

Clear Selection

Validate Field

Save

There are 8 distinct values for this field. Here is a sample:

- null
- A
- A/D
- B
- B/D



NCDOT Project ATLAS



Advancing **T**ransportation through **L**inkages, **A**utomation, and **S**creening

Number of potential impacts: **14**

Download Report

Download GDB

Download DGN

Show Layer Information

Submerged Aquatic Vegetation

NOAA Essential Fish Habitat

Hydrography

NC DEQ Draft 303d Category 5 Assessments

FEMA Stream Study Type (ESM Layer)

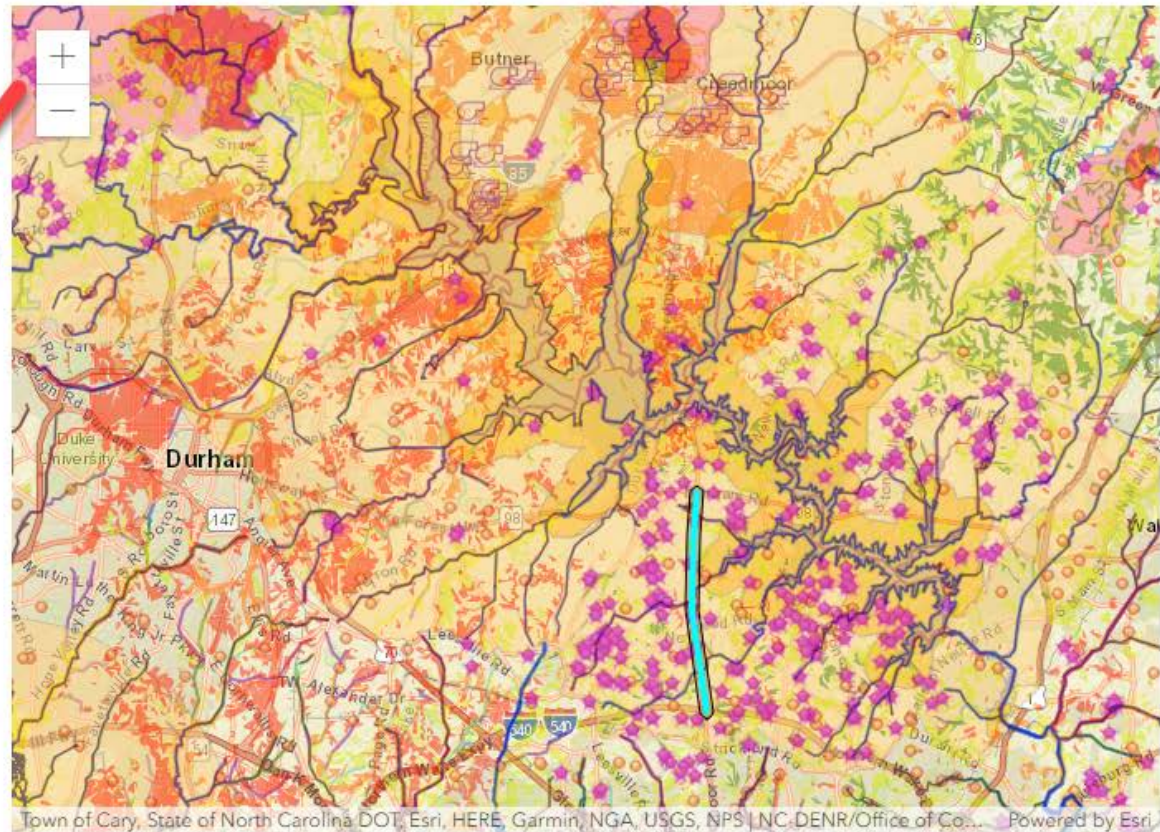
DWR Trout Waters 2014 (ESM Layer)

303d and 305b Streams (ESM Layer)

NC DEQ Outstanding Resource Waters in North Carolina

NC DEQ Water Supply Watershed III

NC DEQ High Quality Waters in North Carolina





NCDOT Project ATLAS

Advancing **T**ransportation through **L**inkages, **A**utomation, and **S**creening



Number of potential impacts: 14

Download Report Download GDB Download S...

- Submerged Aquatic Vegetation
- NOAA Essential Fish Habitat
- Hydrography
- NC DEQ Draft 303d Category 5 Assessments
- FEMA Stream Study Type (ESM Layer)
- DWR Trout Waters 2014 (ESM Layer)
- 303d and 305b Streams (ESM Layer)
- NC DEQ Outstanding Resource Waters in North Carolina
- NC DEQ Water Supply Watershed III
- NC DEQ High Quality Waters in North Carolina

Back Home

Layer Information

Layer Name: NC DEQ Draft 303d Category 5 Assessments
Layer Description: DRAFT North Carolina category 5 assessments or 303(d) assessments. This list of stream segments represents portions of streams that were monitored by a state agency or other approved organizations between 2010 and 2014 and are shown to be exceeding one or more surface water quality standards. This is a DRAFT list and is pending approval by the US Environmental Protection Agency.
Org Name1: NC Department of Environmental Quality
Org Name2: Division of Water Resources
For more information [Click Here](#)

Ok



NCDOT Project ATLAS



Advancing Transportation through Linkages, Automation, and Screening

The screenshot displays the ArcMap interface with the following components:

- Table of Contents:** Lists various layers including NC_Water_Supply_intakes, NC_Public_Water_Supply_Water_Sources, USGS_24K_Streams_2014, T303d_and_305b_Streams_ESM_Layer, NC_Surface_Water_Quality_classification, NC_DEQ_Water_Supply_Watershed_IV, NC_DEQ_Draft_303d_Category_5_Assessments, FEMA_Stream_Study_Type_ESM_Layer, Study_Area, NCDOT_SSURGO_Soils, NC_DEQ_Water_Supply_Watersheds, and Critical_Areas_ESM_Layer.
- Map View:** Shows a vertical stream area highlighted in light green with several blue diamond markers.
- Catalog Window:** Shows a file tree structure with a 'data.gdb' folder containing various layers. A 'readme.txt' file is open, displaying the following text:

```
readme - Notepad
File Edit Format View Help
Readme.txt file for ATLAS screening created on 12/19/2018 12:29:50

Downloaded zip file has Geodatabase for the following layers:

Layers Included:
1. NCDOT Region (ESM Layer)
2. EPA Regions
3. NCDOT Division Boundaries
4. NCDOT County Boundaries - Line
5. NCDOT Smoothed Urban Boundary
6. National Conservation Easement Database
7. NC CGIA Townships
8. NC DWR Fish community sampling sites
9. 303d and 305b Streams (ESM Layer)
10. FEMA Stream Study Type (ESM Layer)
11. NC DEQ Draft 303d Category 5 Assessments
12. NC DEQ Major Basins
13. NC EEP Targeted Local Watersheds
14. USGS 24K Streams 2014
15. Industrial Outfalls (ESM Layer)
16. NCDOT Mitigation Site Polygons
17. Implicit Outfalls (24k Streams) (ESM Layer)
18. USGS Drainage Areas of Selected Sites (ESM Layer)
19. NCDOT Mitigation Site Points
20. NPDES Waste Water Facilities August 2010
21. NPDES Waste Water Outfalls August 2010
22. US EPA Level III Ecoregions
23. NC Geology
24. NC Public Water Supply Water Sources
```



NCDOT Project ATLAS



Advancing **T**ransportation through **L**inkages, **A**utomation, and **S**creening

Project Development Screening Report



Report Date: 04/08/2019

County: Lenoir

All Test

Division: 2

Test Description

EPA Level III Ecoregion:

Southeastern Plains

EPA Level IV Ecoregion:

Rolling Coastal Plain, Southeastern Floodplains and Low Terraces

HUC8: 03020202

CAMA: No

Riparian Buffer: N/A

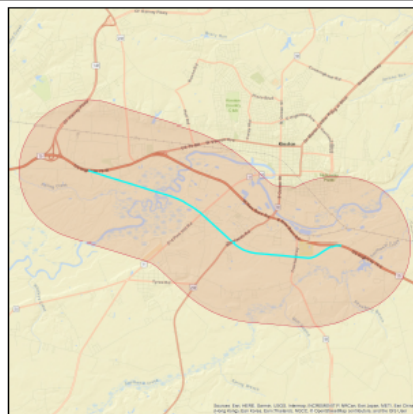
Study Area Size: 19046.3 Acres

Buffer Size: 10560 Feet

STIP/SPOT ID: R-2553C, H090128-B

STIP/SPOT Description:

R-2553C: KINSTON BYPASS, NC 148 (HARVEY PARKWAY) TO US 70 EAST OF NC 58.



Summary of Results

Category	Result
Community	Yes
Conservation Area	Yes
Fish and Aquatics	Yes

Geo Environmental	Yes
Historic Architecture and Archaeology	Yes
Hydrography	Yes
Mitigation	Yes
Physiography	Yes
Public Property	Yes
Threatened and Endangered	No
Transportation	Yes
Utilities	Yes
Water Quality	Yes
Wetlands	Yes

Human Environment

Community	Feature Count	Total Coverage	Nearest Feature
US HUD Public Housing Building	6	N/A	16.3 ft
US DHS HIFLD Manufactured Home Parks	4	N/A	202.2 ft
North Carolina Public Schools	3	N/A	213.6 ft
US DHS HIFLD Day Care Centers	3	N/A	8.5 ft
NC Colleges and Universities	1	N/A	N/A
NC Multi Hazard Threat Database Community Colleges	1	N/A	N/A
NC DEQ DWR Animal Operation Permits	0	N/A	N/A
NC Hospitals	0	N/A	0
NC Multi Hazard Threat Database Nuclear Power Plants	0	N/A	0
NC Multi Hazard Threat Database State Prisons	0	N/A	0
NC Non Public Schools	0	N/A	41.4 ft
NC Public Libraries	0	N/A	1221.8 ft
Geo Environmental	Feature Count	Total Coverage	Nearest Feature
NC DEQ Pre Regulatory Landfill Sites	3	N/A	969.1 ft
NC DEQ Manufactured Gas Plant	1	N/A	N/A
NC Brownfield Agreement Locations	0	N/A	444.8 ft
NC DEQ Active Permitted Landfills	0	N/A	0
NC DEQ Charlotte Brownfield Agreement Boundaries	0	0 ac	0
NC DEQ Dry Cleaning Solvent Cleanup Act Sites	0	N/A	0
Southern Env. Law Center Coal Ash Basins	0	0 ac	0
Historic Architecture and Archaeology	Feature Count	Total Coverage	Nearest Feature
NC Historic Preservation Office Surveyed Only Points	84	N/A	20.3 ft
NC Historic Preservation NR Points	6	N/A	287.8 ft
NC Historic Preservation Office NR DOE Site Points	5	N/A	17.8 ft



NCDOT Project ATLAS



Advancing **T**ransportation through **L**inkages, **A**utomation, and **S**creening

Workbench



NCDOT Project ATLAS



Advancing **T**ransportation through **L**inkages, **A**utomation, and **S**creening

Map

Workbench

About

Additional Resources

Help

Basic Project Info	
Scoping	✓
Public/Local Involvement	✓
Merger	✓
Survey & Photogrammetry	✓
Traffic	✓
Community Characteristic Report (CCR)	✓
Natural Resources	✓
Indirect & Cumulative Effects (ICE)	✓
Air Quality	✓
Noise Analysis	✓
Cultural Resources	✓
Geo-Environmental	✓
Land Use Scenario Assessment (LUSA)	✓
Community Impact Assessment (CIA)	✓
Project Conclusion	✓

Natural Resources



Is Natural Resources required?

Yes No

a. Natural Resources:

* Was Jurisdictional Area Delineation completed?

Yes No

* Were T&E surveys completed?

Yes No

* What effect will the project have on Threatened and Endangered Species or their critical habitat?

* Select species that are potentially impacted:

* Are there any species for which biological conclusions are unresolved?

Yes No

If so, which and why?

* Has the USFWS requested a Biological Assessment during Section 7 consultation?

Yes No



NCDOT Project ATLAS



Advancing **T**ransportation through **L**inkages, **A**utomation, and **S**creening

Layers

Legend Opacity

- WRC Trout Waters
 - Catch and Release/Artificial Flies Only Trout Waters
 - Catch and Release/Artificial Lures Only Trout Waters
 - Delayed Harvest Trout Waters
 - Hatchery Supported Trout Waters
 - Special Regulation Trout Waters
 - Wild Trout Waters
 - Wild Trout/Natural Bait Waters
- Boating Access Areas
- North Carolina State Parks

Attributes

OBJECTID = 279
Excel_ID = 239
Displ_Name = Big Laurel Creek
MHTW_Reach =
FID_1 = 0
EXCEL_ID_1 = 239
FREQUENCY = 67
FIRST_WRC_ = Hatchery Supported Trout Waters
FIRST_REG_ = Mars Hill watershed boundary to the S.R. 1318 [Big Laurel Road] bridge downstream of Bearpen Branch
FIRST_REG1 = Big Laurel Creek
FID_12 = 0
MHTW_REA_1 =
FREQUENC_1 = 18215
TRACT_NUM =
[Zoom to](#)



NCDOT Project ATLAS



Advancing **T**ransportation through **L**inkages, **A**utomation, and **S**creening

Connect NCDOT
BUSINESS PARTNER RESOURCES

[Home](#) [Help](#) [Team Sites](#) [Site Map](#)

[Doing Business](#) [Bidding & Letting](#) [Projects](#) [Resources](#) [Local Governments](#)

Search this site



U-5834 ▶ U-5834

US 25 (Hendersonville Rd) to SR 3157 (Weston Rd). Upgrade existing roadway.
Buncombe

[Home](#) > [Division 13 Preconstruction](#) > [U-5834](#)

Project Site

- [Preconstruction Home](#)
- [Grant Consulting Firm Access](#)
- [Lock/Unlock Plans or Provisions](#)
- [Key Documents](#)
- [Discipline Specific Links](#)
- [Preconstruction Help](#)
- [Project Commitments](#)
- [Project Contacts](#)
- [Email Project Contacts](#)
- [Project Structures](#)
- [Submittal Tracker](#)
- [Recently Modified](#)



▶ General

▶ Disciplines

▶ Collaboration

▶ LET Preparation

▶ ATLAS Tools

- [ATLAS Workbench](#)
Use the Workbench to monitor project status, submit your final project documents, and upload spatial deliverables.
- [ATLAS Data Search Tool](#)
Use the Data Search Tool to access GIS datasets from multiple sources in one single search interface.
- [ATLAS Screening Tool](#)
Use the Screening Tool to analyze a project study area for natural and human environment impacts based on key GIS datasets.

Precon Project Map



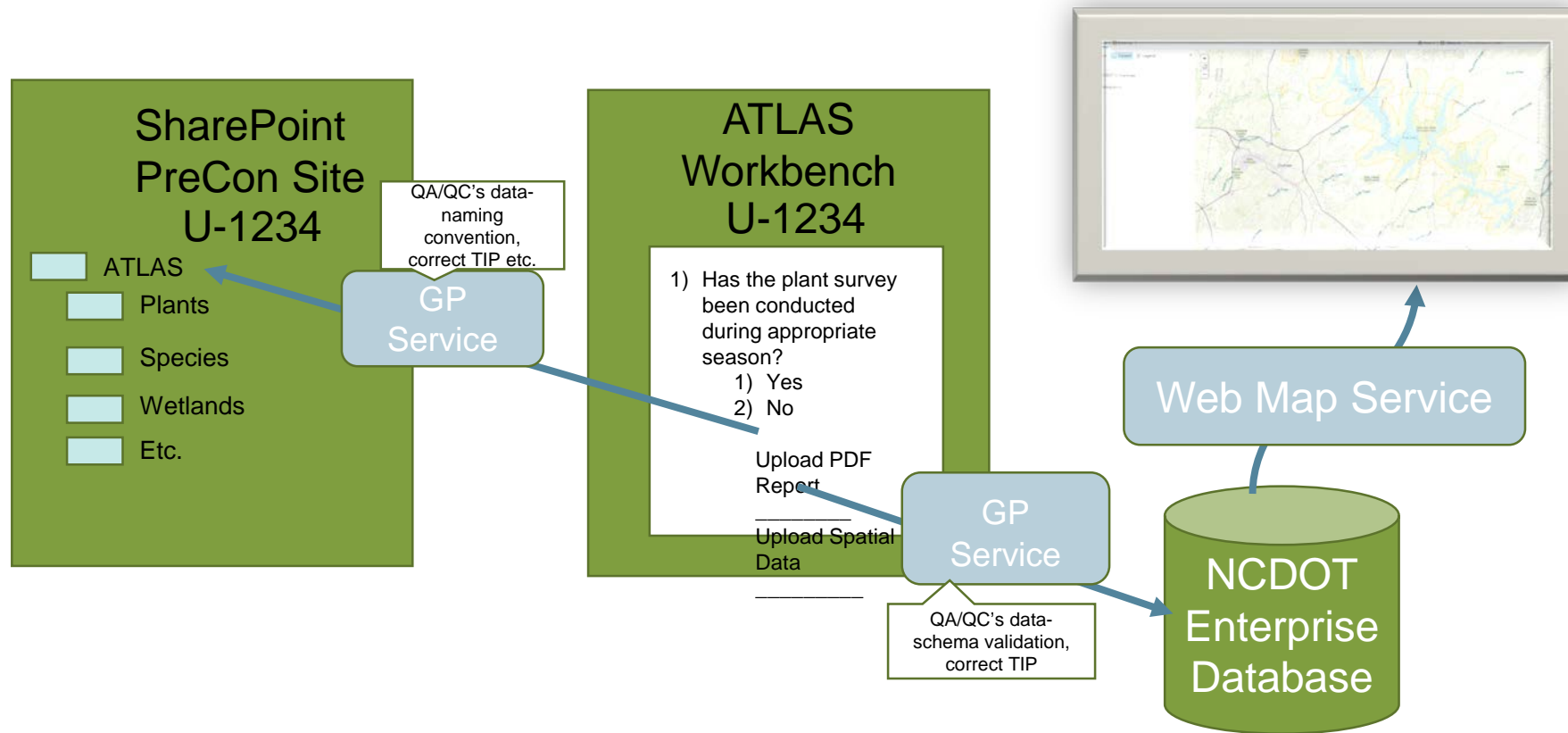


NCDOT Project ATLAS



Advancing **T**ransportation through **L**inkages, **A**utomation, and **S**creening

• Workbench: Data Flow





NCDOT Project ATLAS



Advancing **T**ransportation through **L**inkages, **A**utomation, and **S**creening

Some Frequently Asked Questions

- Can we customize for our projects?
- Can we add data layers later?
- Can we make changes in workflows to match new policies and procedures?
- Can we add our business unit workflow?
- Can we use ATLAS for non STIP projects? For Non-Highway projects? For Division Managed project? For unfunded projects?....

YES!



NCDOT Project ATLAS



Advancing **T**ransportation through **L**inkages, **A**utomation, and **S**creening

Application Management Tool

ATLAS Application Management Portal

- Manage ATLAS Search Tool
- Manage ATLAS Screening Tool
- Manage ATLAS Workbench
- Manage ATLAS Disclaimer
- Manage ATLAS About
- Manage ATLAS Additional Resources
- Manage ATLAS Help

ATLAS Application Management Portal

Manage » Search Tool » Manage Search Results

Layer Name	Linked
2012 Integrated Reporting Water Quality Assessments	NRTR .I
2015RareRoadsidePopulations_pt_nodupl.shp	No
2016 Traffic Segments Primary	Traffic F
2016 Traffic Segments Secondary	Traffic F
303d and 305b Streams (ESM Layer)	5
911 Response with Transport Capability	
911 Response without Transport Capability	
Air Medical/Specialty Care Transport	

ATLAS Application Management Portal

Home » Decision Tree Administration

Select a part of the decision tree to configure:

- Categories
- Groups
- Controls

Configure Controls for Natural Resources

Add Control

Order	Title	Control Type				
1	Was Jurisdictional Area Delineation completed?	Yes No	Edit	Delete	Up	Down
2	Were T&E surveys completed?	Yes No	Edit	Delete	Up	Down
3	What effect will the project have on Threatened and Endangered Species or their critical habitat?	Dropdow n	Edit	Delete	Up	Down
4	Select species that are potentially impacted:	Multiple Select	Edit	Delete	Up	Down
5	Are there any species for which biological conclusions are unresolved?	Yes No	Edit	Delete	Up	Down
6	If so, which and why?	Text	Edit	Delete	Up	Down
7	Has the USFWS requested a Biological Assessment during Section 7 consultation?	Yes No	Edit	Delete	Up	Down



NCDOT Project ATLAS



Advancing **T**ransportation through **L**inkages, **A**utomation, and **S**creening

BUT!

We must follow standards to make it work!

Standards Document

- Section for each type of document and data layer on naming conventions, metadata, etc.
- Need to incorporate into consultant contracts, deliverables, and expectations.

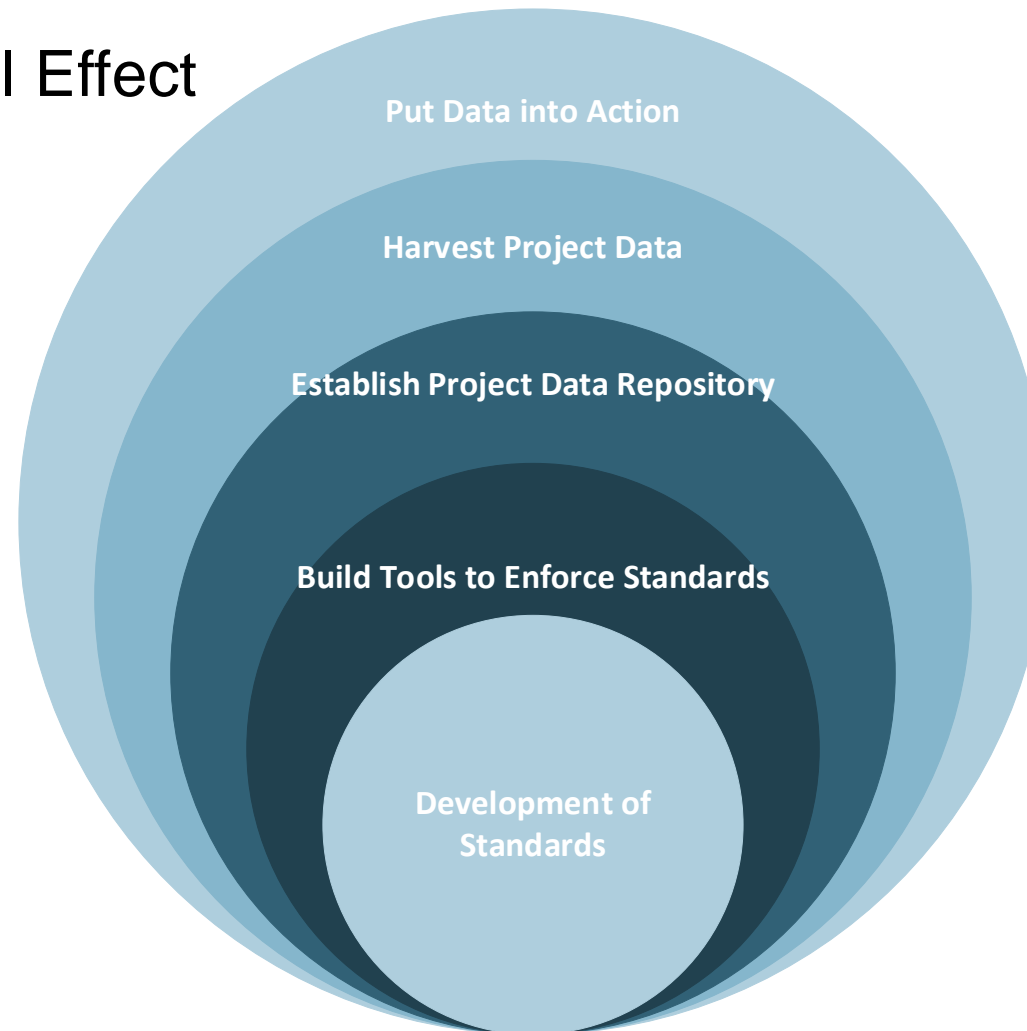


NCDOT Project ATLAS



Advancing **T**ransportation through **L**inkages, **A**utomation, and **S**creening

Workbench: Snowball Effect





NCDOT Project ATLAS



Advancing **T**ransportation through **L**inkages, **A**utomation, and **S**creening

Go Live scheduled for May 31, 2019

Training to immediately follow through June and July

Regional one day hands-on sessions

8:00 am - 4:00 pm with optional 4:00 - 6:00 lab

Washington

Wilmington

Raleigh

Winston-Salem

Charlotte

Asheville

Brevard



NCDOT Project ATLAS



Advancing **T**ransportation through **L**inkages, **A**utomation, and **S**creening

QUESTIONS?
ATLAS@ncdot.gov