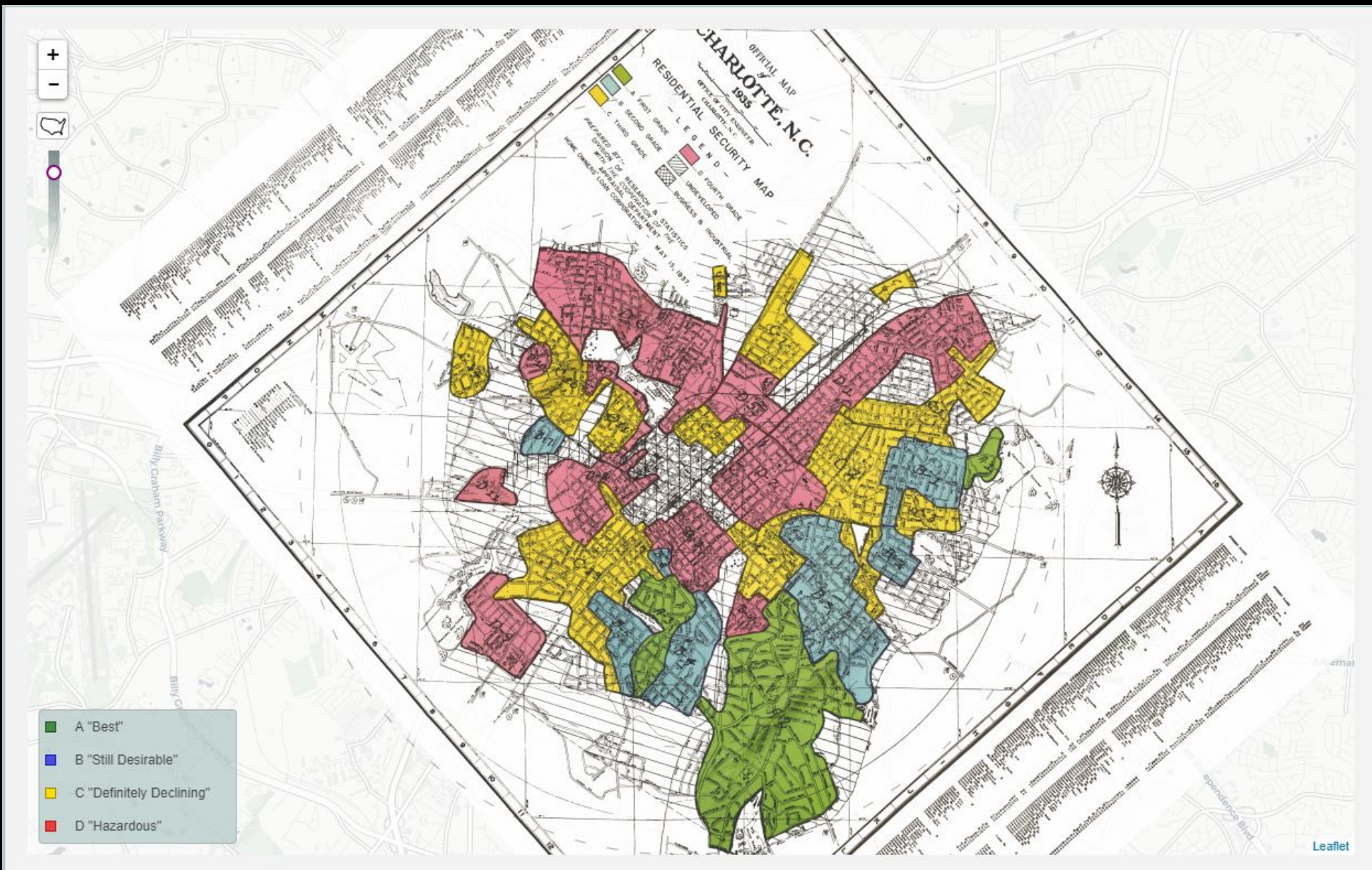


Mapping Inequality in Charlotte

Historic Policies that Shaped Charlotte's Neighborhoods

Presentation Overview

- Past Practices
 - Housing Discrimination
 - Urban Renewal
- Current Conditions
 - Demographics
 - Public Transit Access
- The Way Forward
 - 2040 Comprehensive Plan
 - Unified Development Ordinance (UDO)



1935 Redlining

Brooklyn project we have gone beyond the stages of demolition and clearing and are well into fulfillment of the development plans which were so carefully formulated years ago.

But our obligation is to Charlotte's citizens and to

the city — may never be allowed to deteriorate again. Today we are paying for and doing the work of renewal necessitated by the false economy and lack of foresight of previous generations. We *cannot* pass these same follies to future generations.

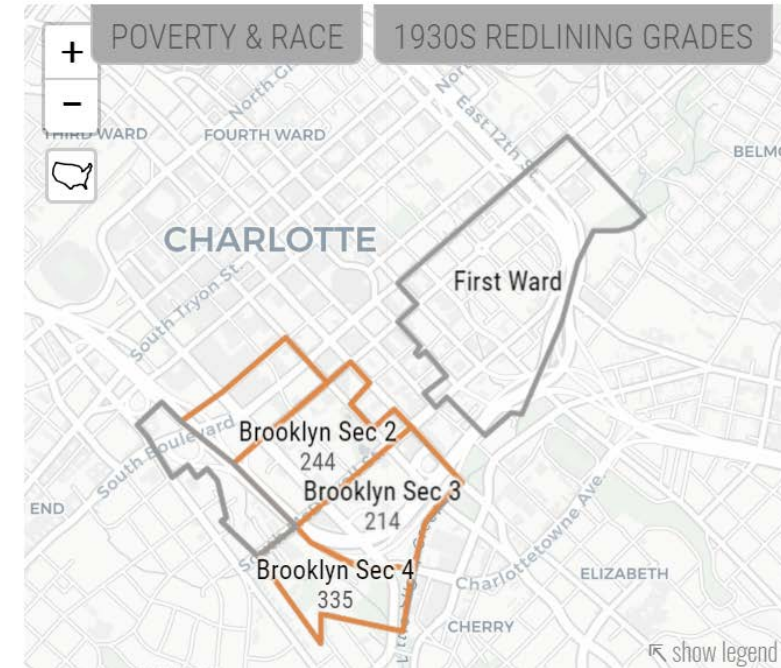


Renewing Inequality

Family Displacements through Urban Renewal, 1950-1966

The People & the Program Sources & Method Legislative History

Search by city or state



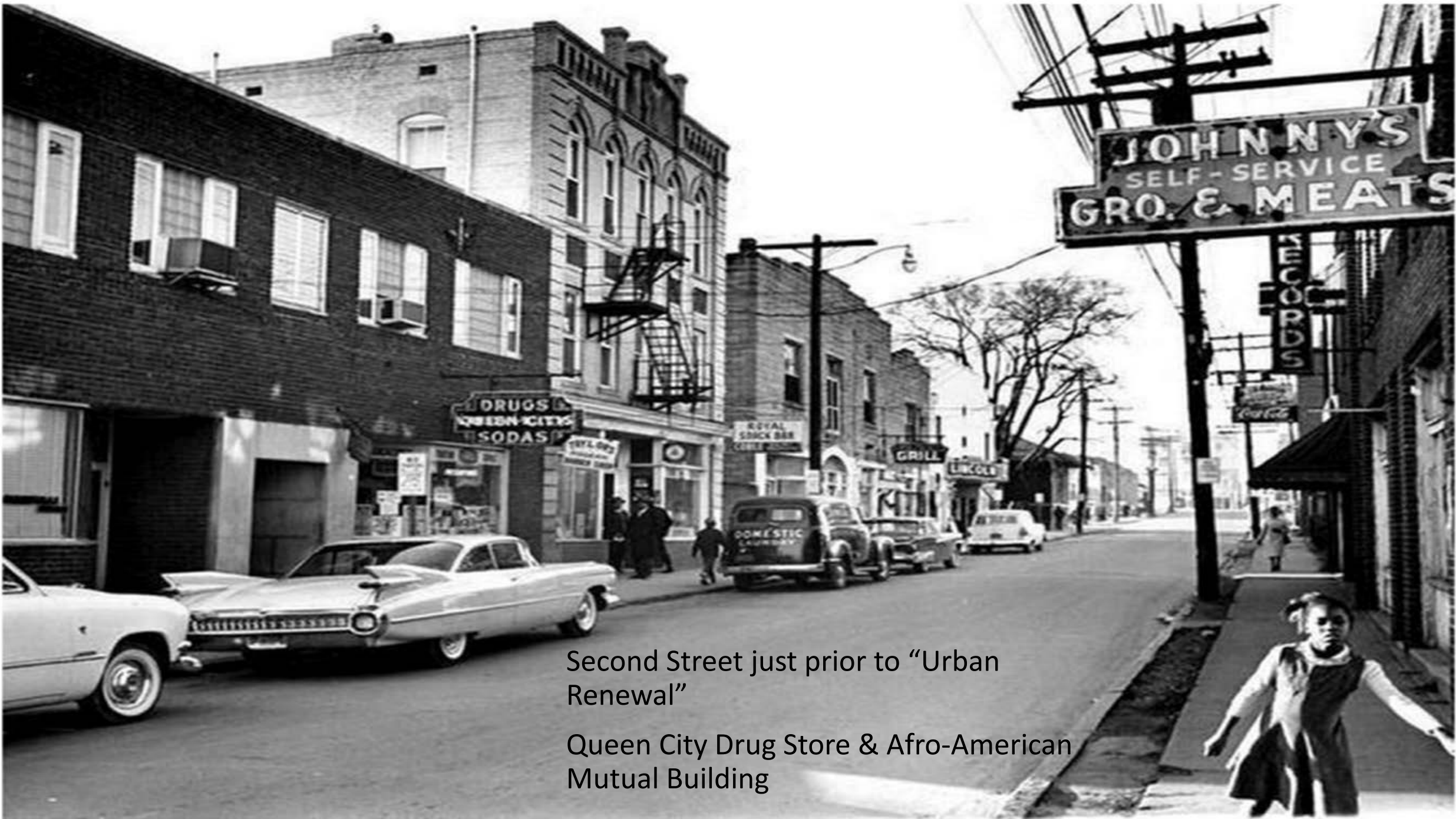
CHARLOTTE, NC

By the late 1960s, an estimated **1,009** families had been displaced by urban renewal projects in Charlotte, **100%** of which were families of color.

Project footprints are available for projects in hold below



Urban Renewal of Center City



Second Street just prior to “Urban
Renewal”

Queen City Drug Store & Afro-American
Mutual Building

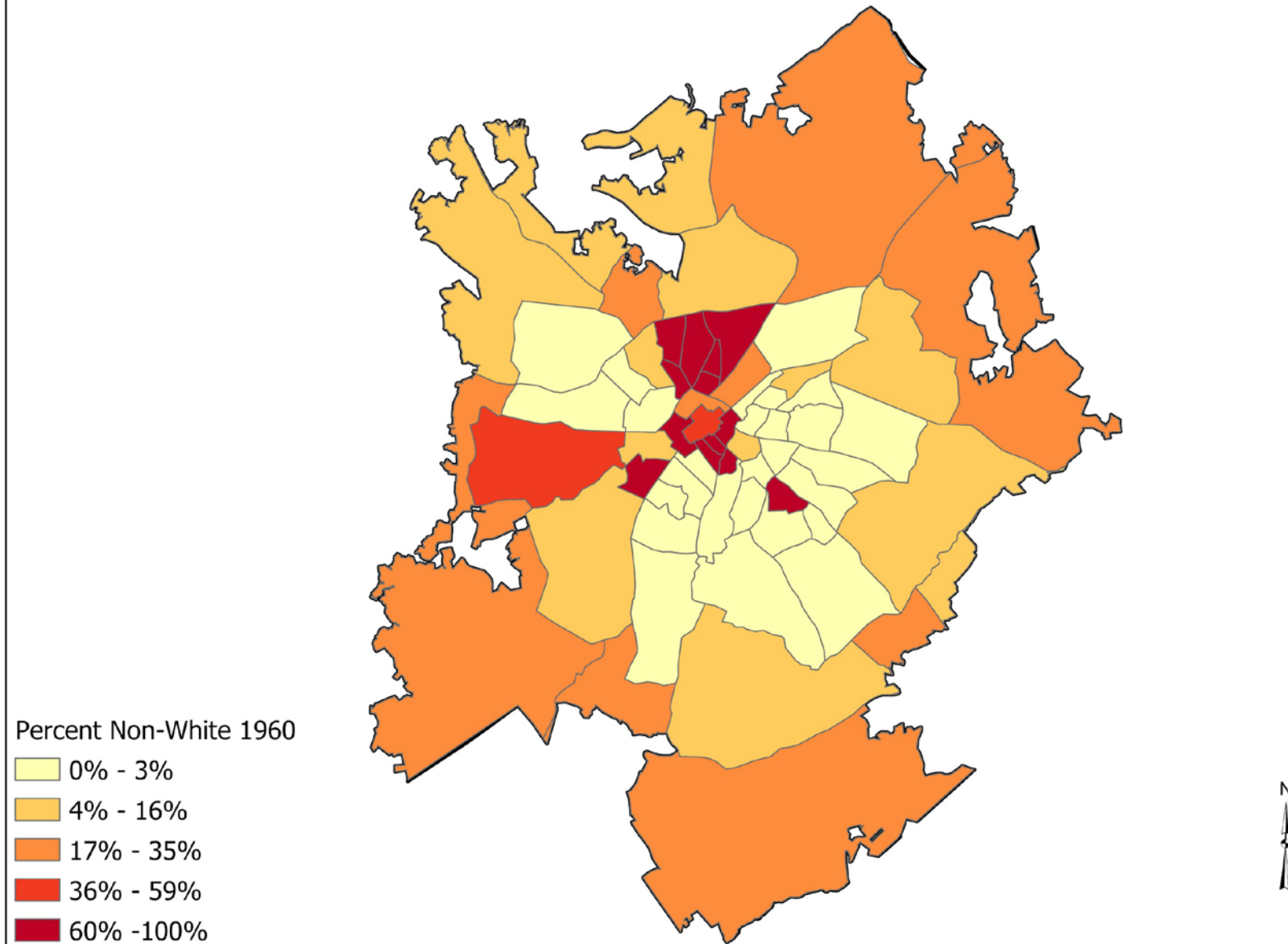


Dr. E. French Tyson practiced in Charlotte from 1913 to 1950. MAYE T. JACKSON.
Below: His home was located at 907 South Brevard Street. LAURA M. BOOTON.

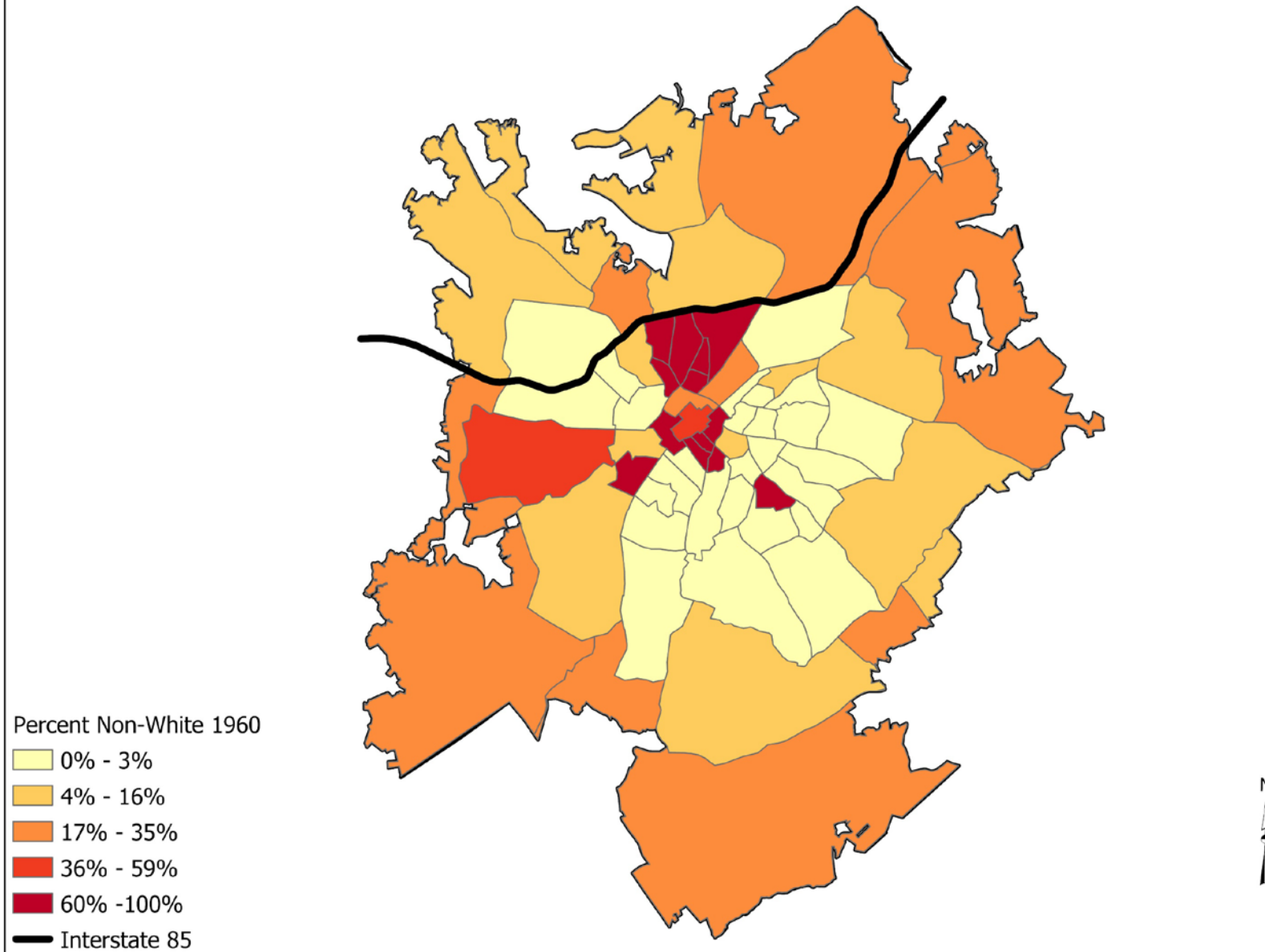


Brooklyn included
middle-class homes and
rental homes for working
families

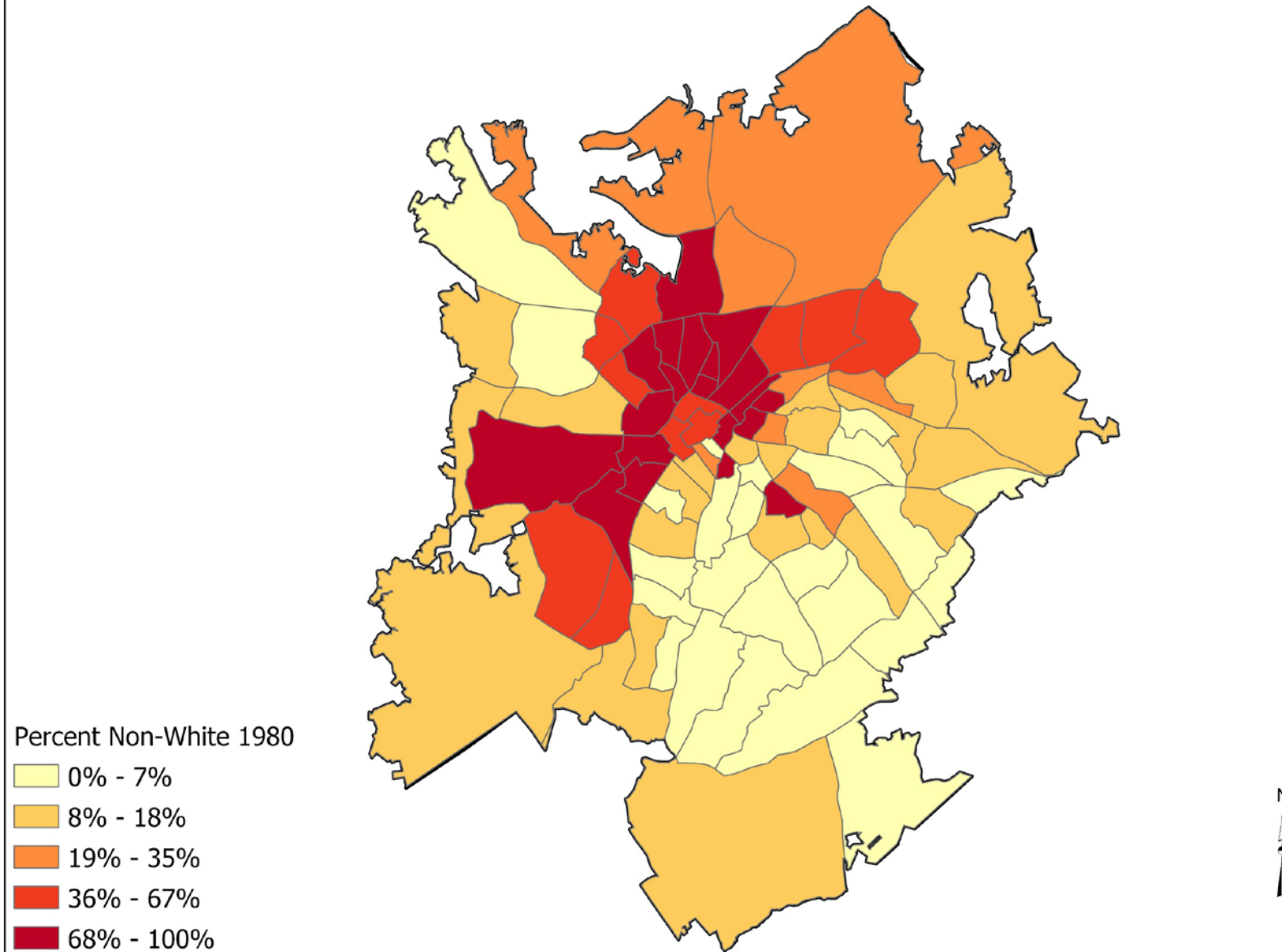
Racial Distribution In 1960



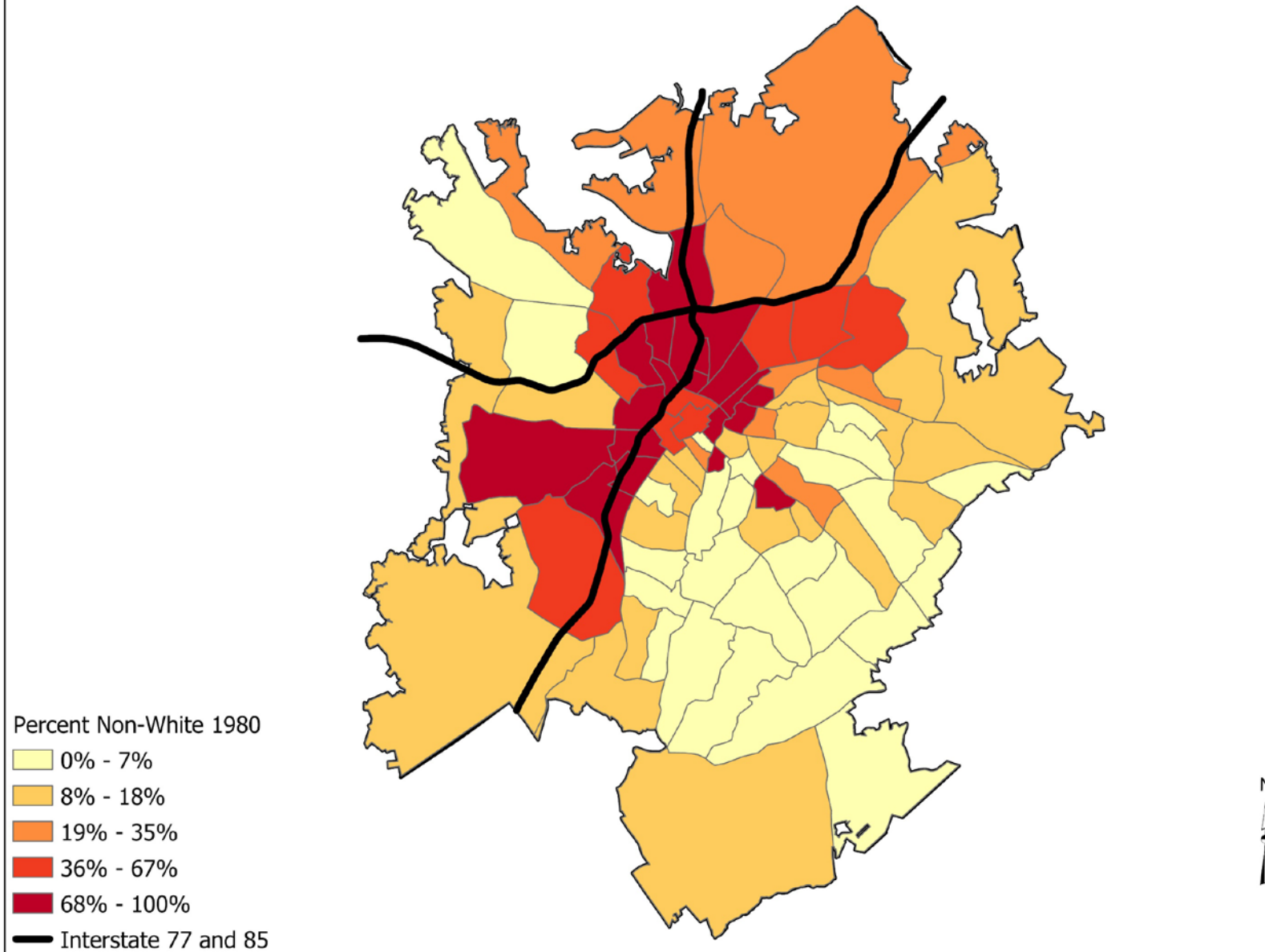
Racial Distribution In 1960



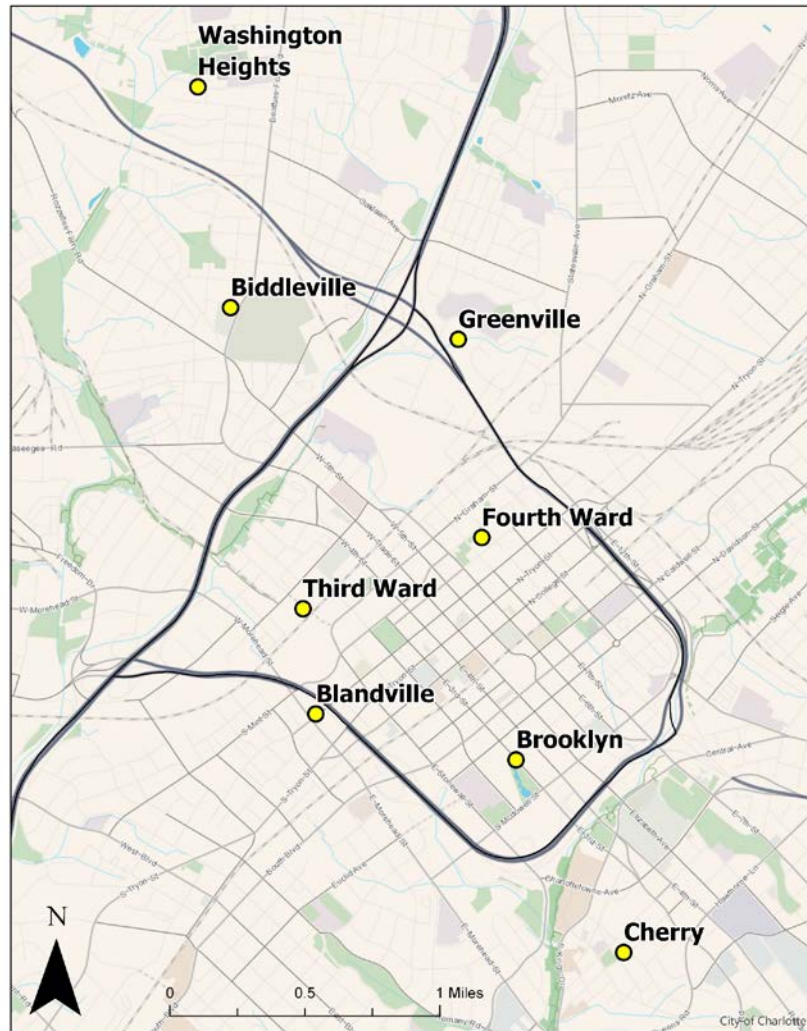
Racial Distribution In 1980



Racial Distribution In 1980

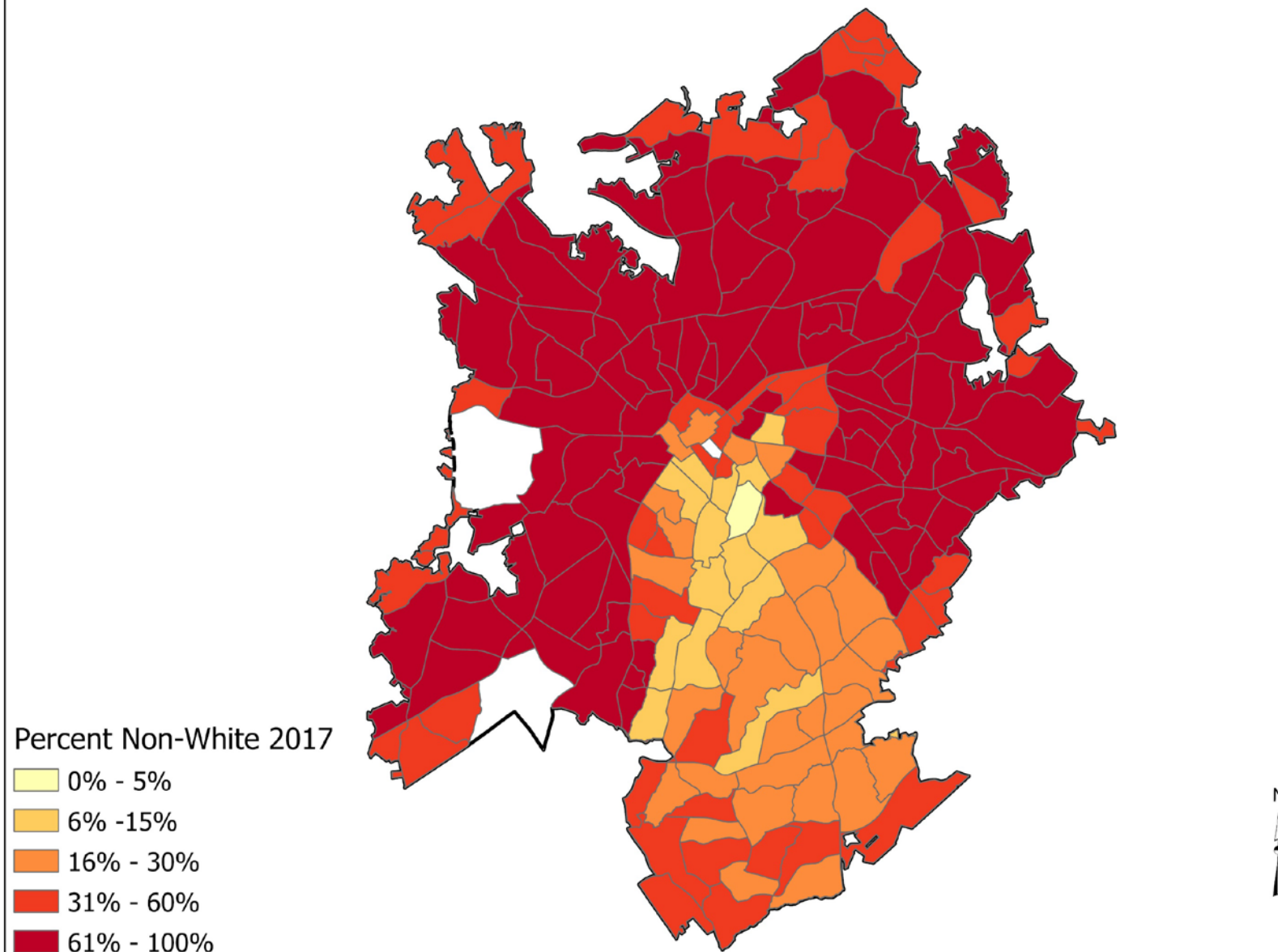


Historic African American Neighborhoods

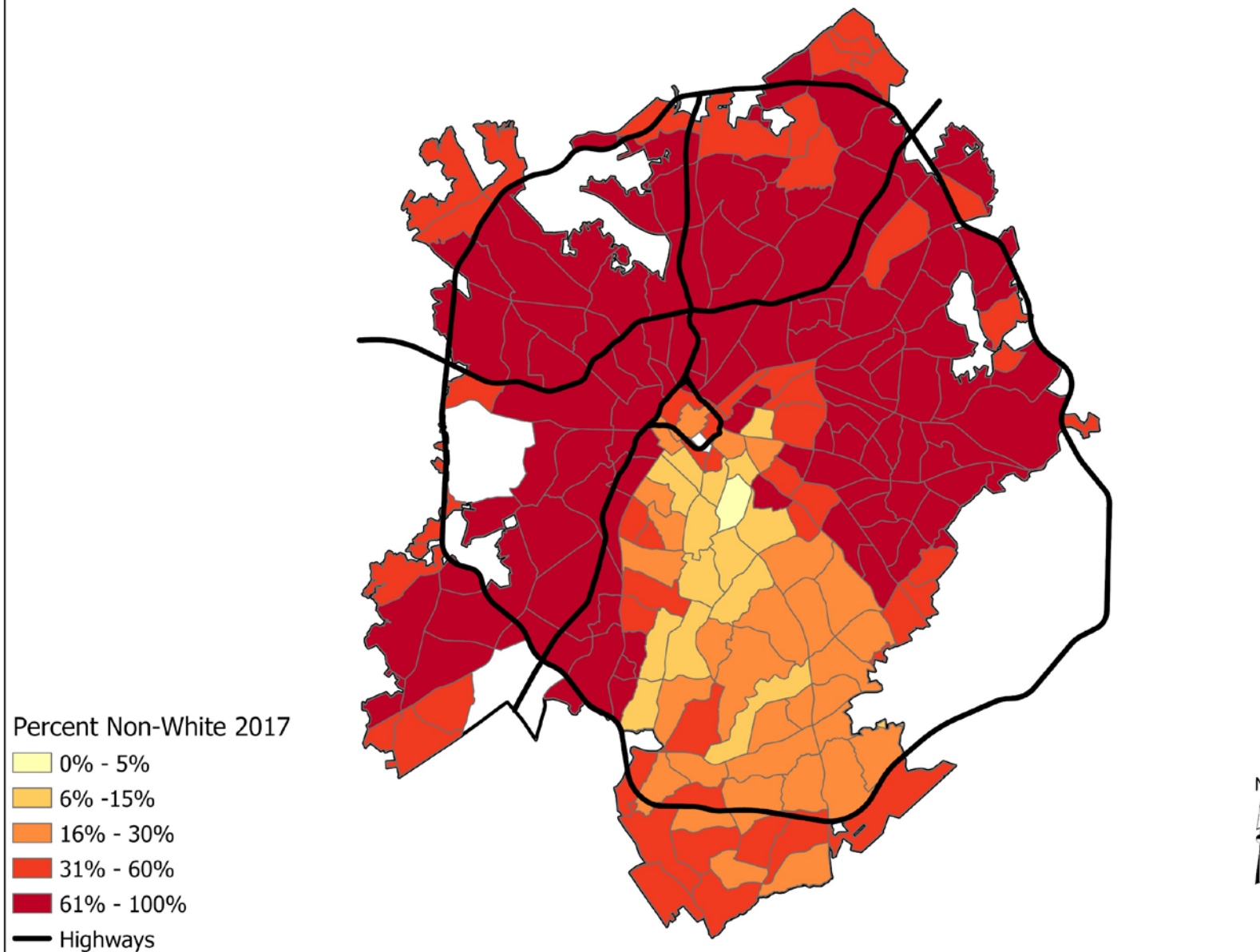


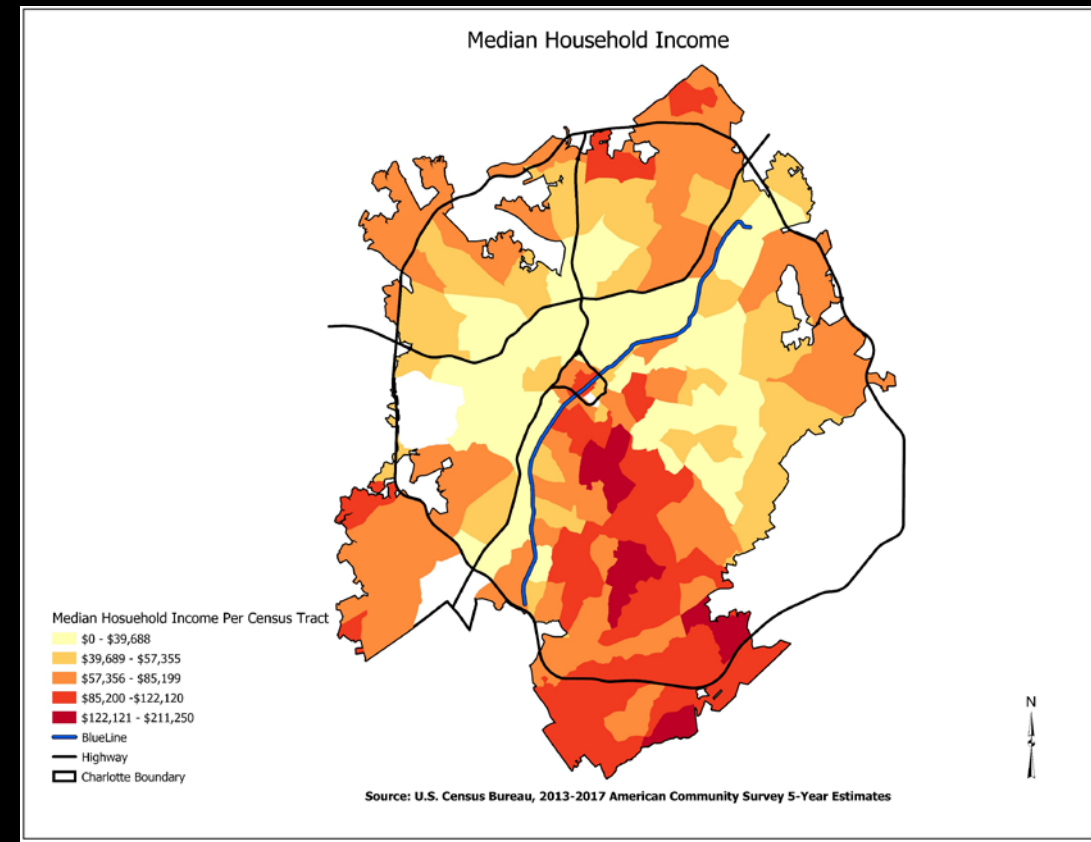
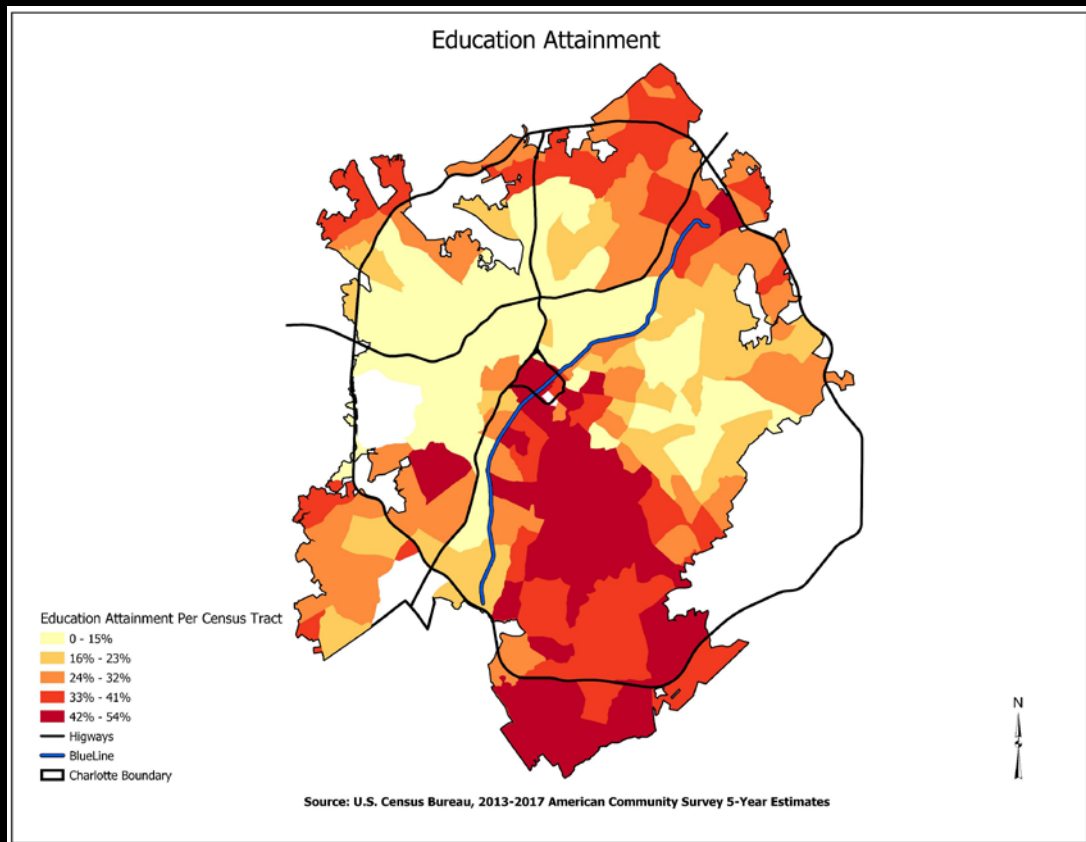
Urban Renewal Development of I-277

Racial Distribution In 2017

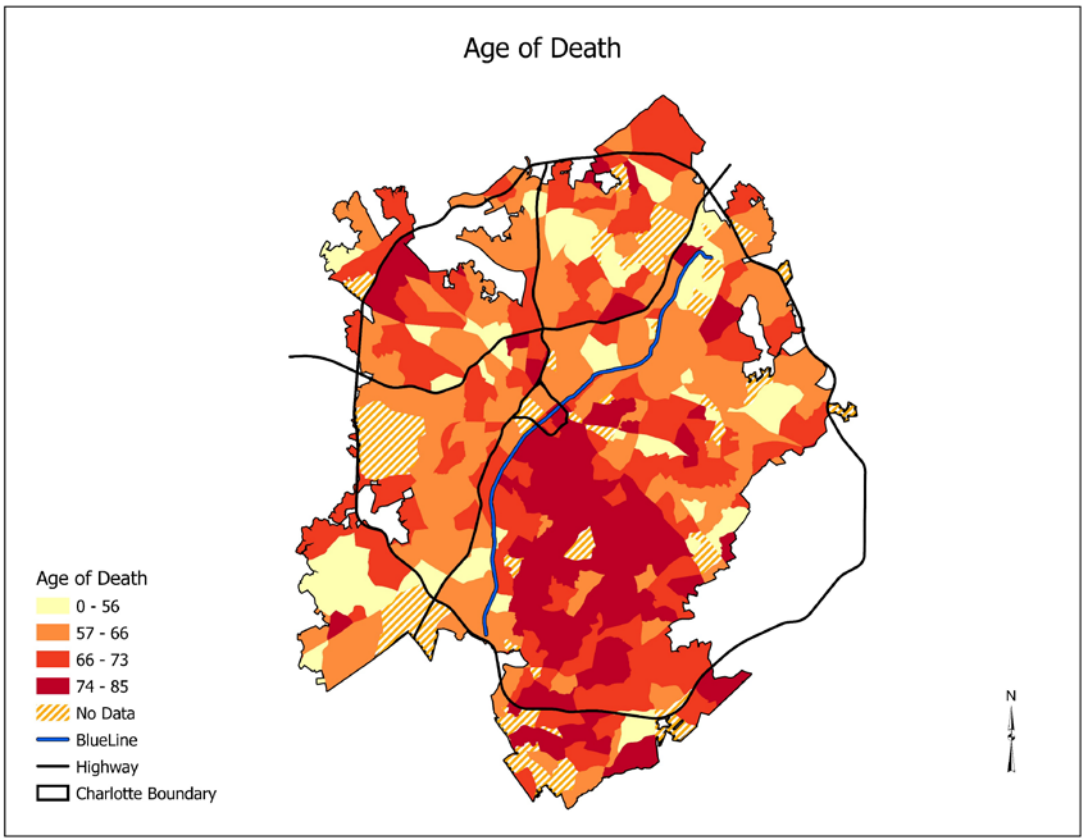
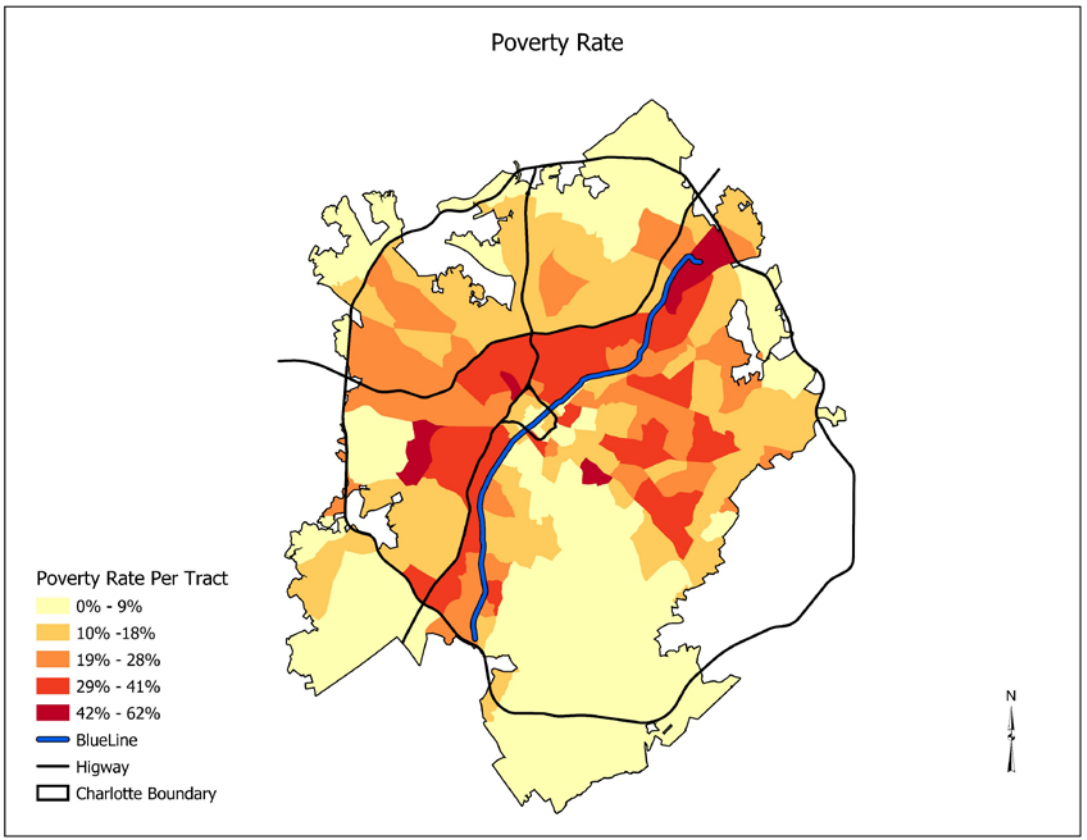


Racial Distribution In 2017





Present



Present



Future

- 2040 Comprehensive Plan
- Housing Location Policy Tool
- Unified Development Ordinance (UDO)
- Charlotte Area Transit System (CATS) 2030 Plan

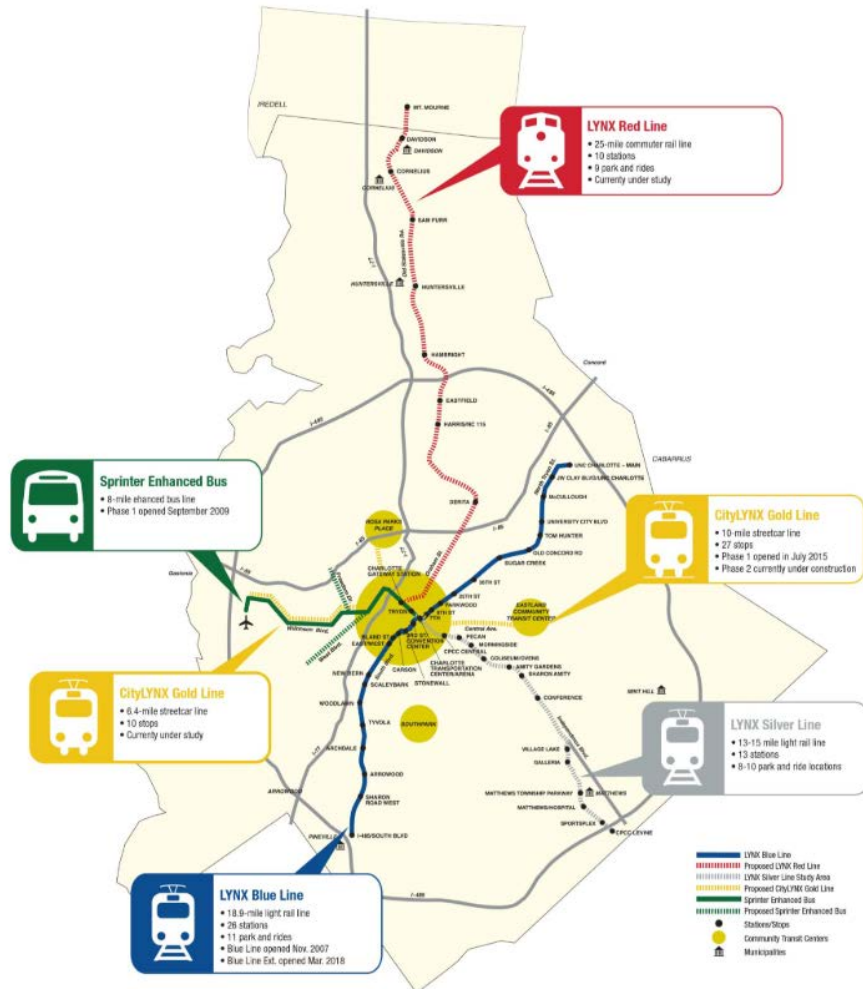
WHAT CAN UDO



Charlotte Place Types and Unified Development Ordinance

- Density bonus for affordable housing along Lynx Blue Stations
- Rewriting existing zoning ordinance

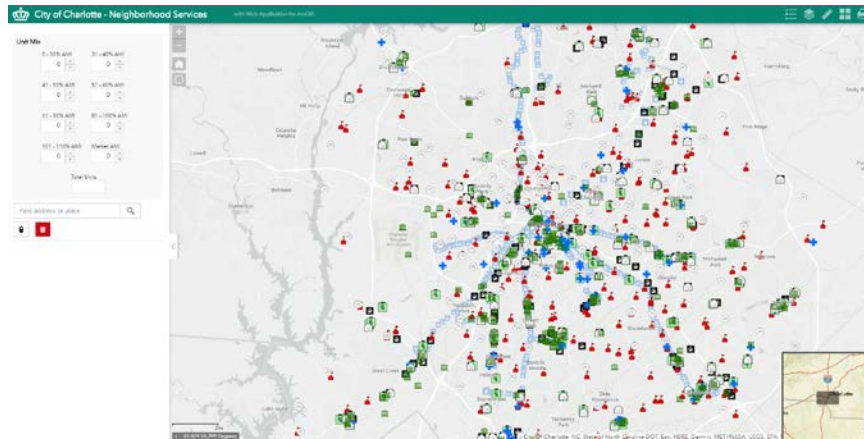
LYNX SYSTEM MAP



- Extension of the City Lynx Gold Line to the West side
- Construction of the Lynx Red line to connect the North side to City Center
- Improve Bus Sprinter Bus services on the West Side



- First Comprehensive Plan since 1975
- Focused on Authentic and Equitable Participation
 - X number of meetings undertaken
- Creates an Integrated Framework for Growth, Development and Community Design
- Highly focused on Interwoven Equity for the next 20 years



- Evaluates Proposed developments to ensure access to Amenities
- Incorporates existing demographic and socio-economic data to inform location of new affordable housing

Thank You

Charlotte Planning Design and Development
Decision, Analytics, and Research Team (DART)

Providence Adu : Providence.Adu@charlottenc.gov

Yorknek Romero : Yorknek.Romero@charlottenc.gov