



NORTH CAROLINA
Department of Transportation



Rail Division Overview and Rail Plan Update

Jason Orthner, P.E.
Rail Division Director

Rachel Vandenberg, P.E.
SVP Ports and Intermodal
Dewberry

Beth Smyre, P.E.
Associate, Senior Planner
Dewberry

April 24, 2019

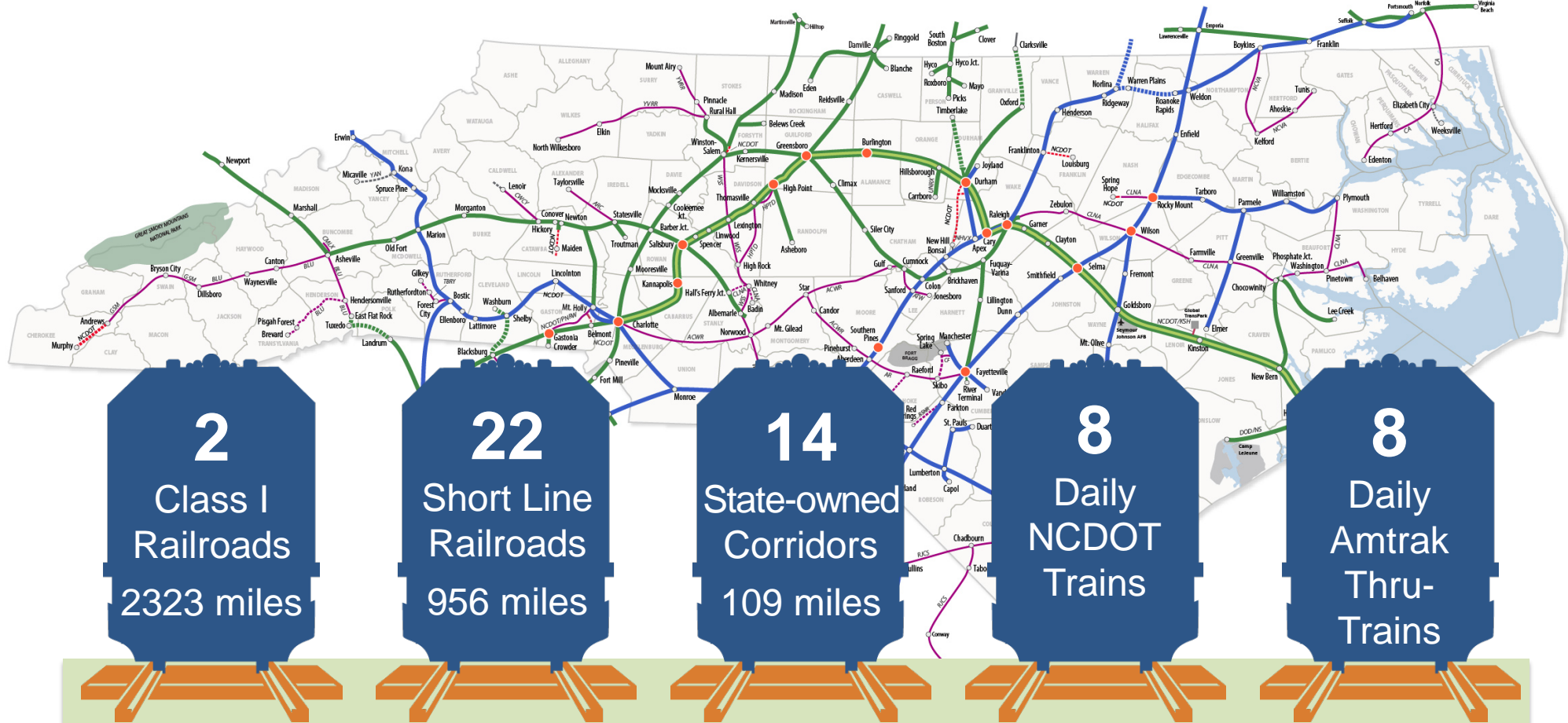


Rail Division Mission



The safe and efficient movement of people and goods on North Carolina's railroads through freight, passenger and safety programs, supporting job creation and economic growth.

Railroads Operate in 86 NC Counties



Direct Economic Impacts for Freight and Passenger Rail in North Carolina – \$1,875M

Freight – \$1,754M, Passenger – \$121M

Source: North Carolina Comprehensive State Rail Plan, 2015

Rail Programs & Services



Planning & Development

- Intermodal & Freight Planning
- STI & Project Development
- Freight Improvement Program Management
- Passenger Rail Planning
- Environmental Documentation



Engineering Coordination & Safety

- Crossing Safety Studies
- Crossing Surfaces & Rail Encroachments
- Grade Separation Design
- Inventory & Data
- RR/Transit Safety Oversight
- Safety Outreach & Training



Engineering Design & Construction

- Rail Project Engineering & Design
- Construction Management
- Highway Project Delivery Support
- Signals & Devices



Operations & Facilities

- Passenger Operations
- Equipment, Facilities & Stations
- Customer Service
- Rail Corridor Preservation



STI Rail Project Delivery

- Funded projects include:
 - Grade separations: **27 projects**
 - Terminals: **3 projects**
 - Track Improvements: **15 projects**
 - Station-related: **3 projects**
- Projects developed and administered by experts in Rail Division



\$700M
Managed
by Rail
Division



Rail Division Safety Programs

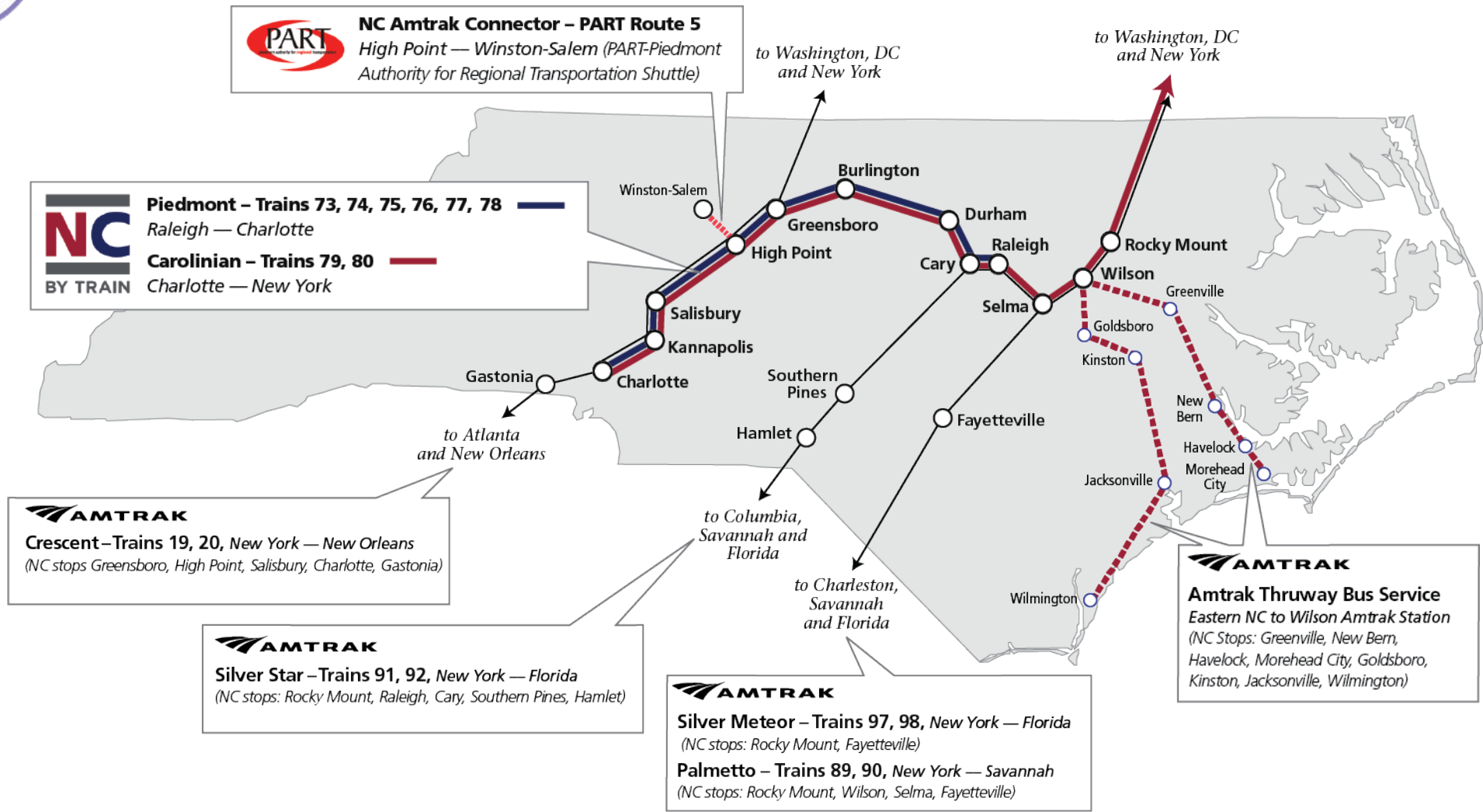
- **At-grade Crossings:**
 - Sealed Corridor Program: *High volume, higher speed routes*
 - Crossing Warning Devices: Statewide improvements and new technology
 - Traffic Separation Studies: Working with communities to separate highway and rail conflicts
 - Crossing Consolidations: Removed over 300 crossings to date
- **BeRailSafe**
 - Education, Enforcement, Engineering
 - Focus on pedestrian trespassing on rail corridors



NCDOT
BeRailSafe
BeRailSafe.org



North Carolina Passenger Rail Service





Rail Passenger Operations

Recent Successes

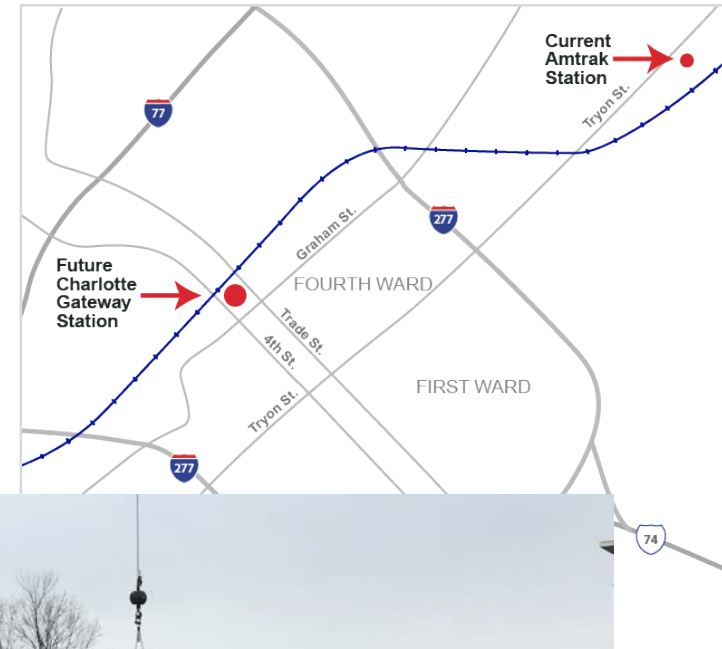
- Added 3rd *Piedmont* round trip in June 2018
- Opened Raleigh Union Station July 2018
- *Piedmont* – Highest Customer Satisfaction in nation – November 2018 – Feb. 2019





Charlotte Gateway Station

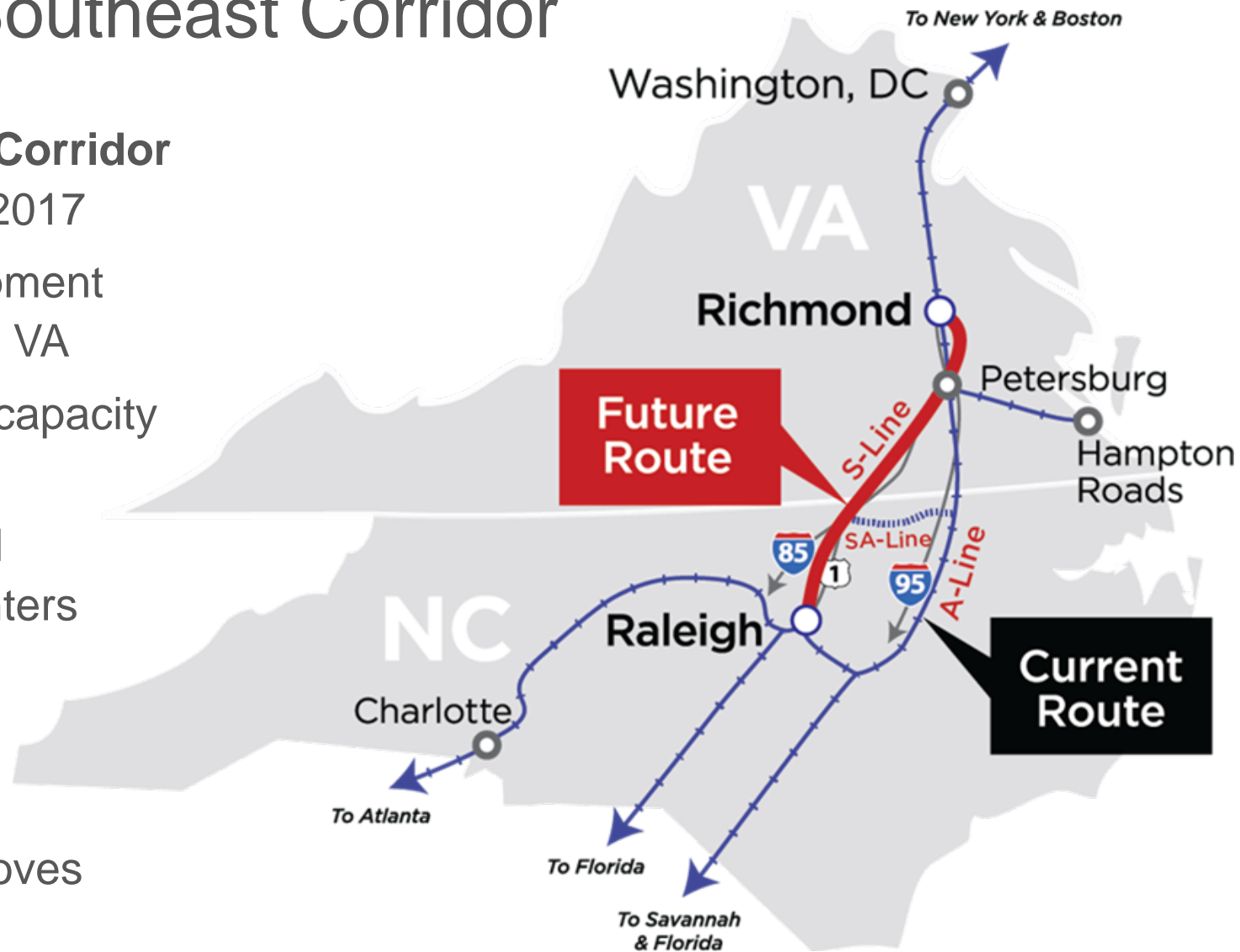
- Moving station to Uptown
- Anticipated to significantly increase ridership
- Current station not easily accessible – small and outdated, and subject to flooding
- Phase 1 under construction; targeted for completion in 2022
- Working with City of Charlotte to develop station area



Southeast Corridor

Value of developing the S-Line Corridor

- Federal Record of Decision 2017
- Enhances economic development opportunities in rural NC and VA
- Provides north-south freight capacity and network resiliency
- Connects manufacturing and job centers to population centers
- Provides expansion opportunities for freight and passenger rail
- Reduces trip times and improves on time performance





Raleigh to Richmond portion of Southeast Corridor

- Work is underway on ISDP:
 - Opportunities to phase infrastructure
 - Possible extension of Raleigh to Charlotte intercity service to Wake Forest and Henderson
 - Analyzes new service schedules to Washington, DC and connections to Virginia services
- Corridor acquisition strategy
- Leveraging projects for Federal funding opportunities



Federal Record of Decision complete for Raleigh to Richmond portion of the Southeast Corridor

Carolina Connector (CCX) Update

- **Terminal Funding**

- \$118.1M (NCDOT)

- includes engineering, terminal and railroad construction

- \$40M (CSX)

- includes land acquisition, a portion of terminal equipment, environmental work, administrative and development costs

- **Construction begins:** Spring 2019

- **Construction timeline:** 18-20 months

- **Groundbreaking:** April 2019

- **Marketing coordination underway**

- Includes NCDOT, CSX, Carolinas Gateway Partnership and other regional economic development partners





What is the State Rail Plan?

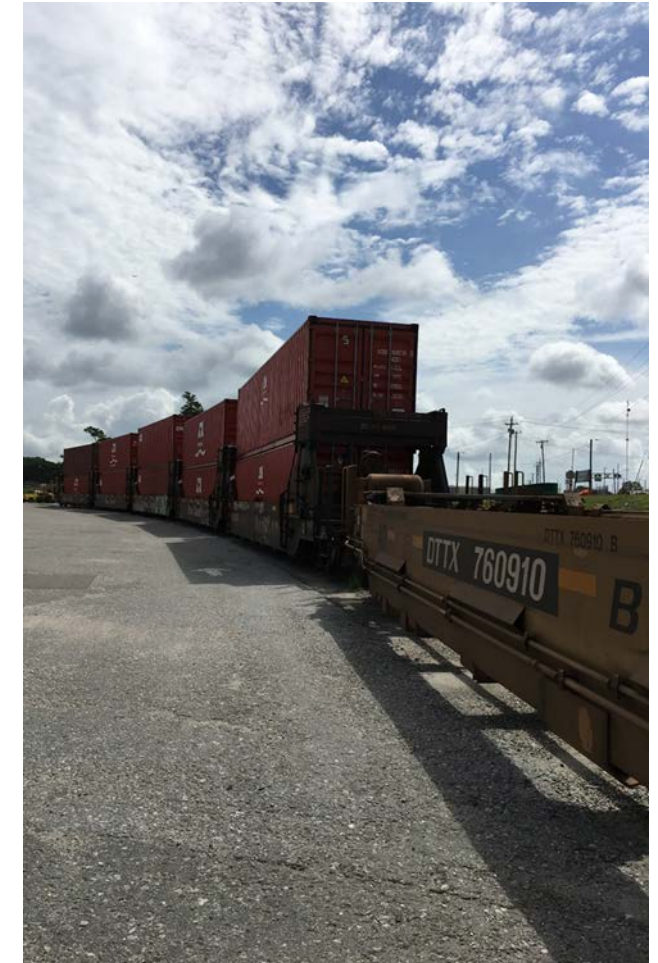
- Define the state's vision for rail and how that will be achieved
- Guides statewide freight and passenger rail investments over next 25 years, including recommendations on funding strategy
- Required by PRIIA and FAST Act
- Last updated in 2015



State Rail Plan Goals

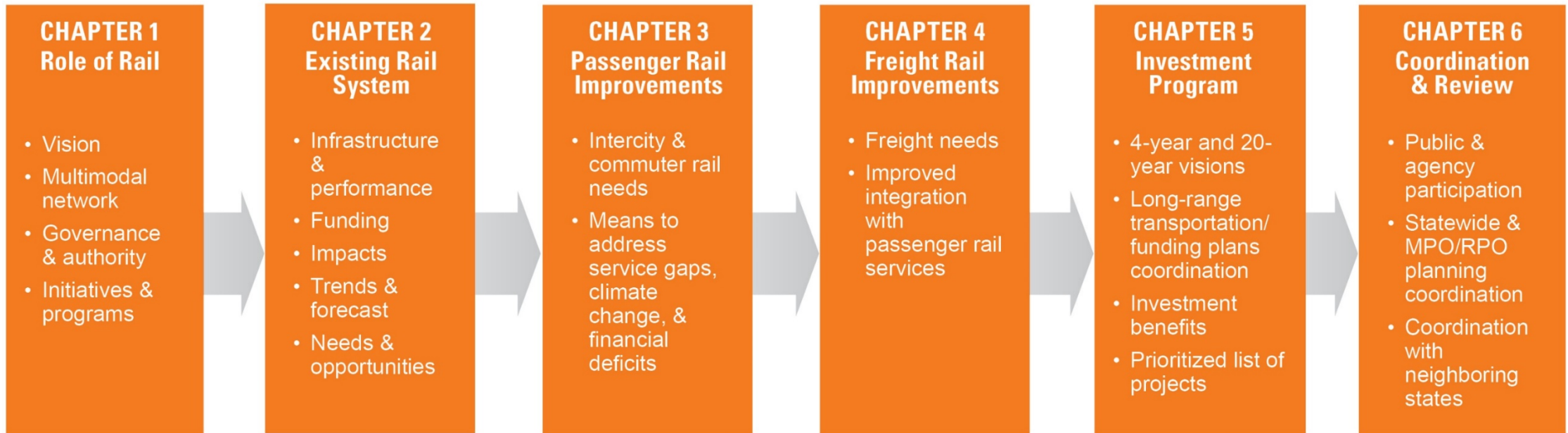
The State Rail Plan defines priorities for development and enhancement of a statewide rail system that:

- provides access for freight and passenger rail users;
- enhances the safety and resiliency of rail infrastructure;
- improves the overall health of the statewide transportation network; and
- seeks to realize economic opportunities by supporting existing and potential rail-served markets, industries and businesses.



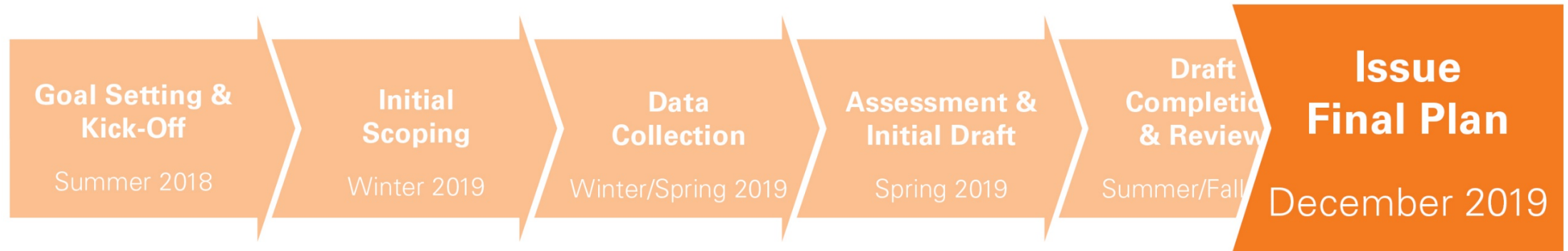


USDOT Requirements & Guidance





State Rail Plan Update



Lessons Learned 2015

- Engagement, engagement, engagement!
- Details support the big picture – Vision
- STI alignment
- Corridor priorities
- Network resiliency
- Identify candidate projects for Federal grant opportunities



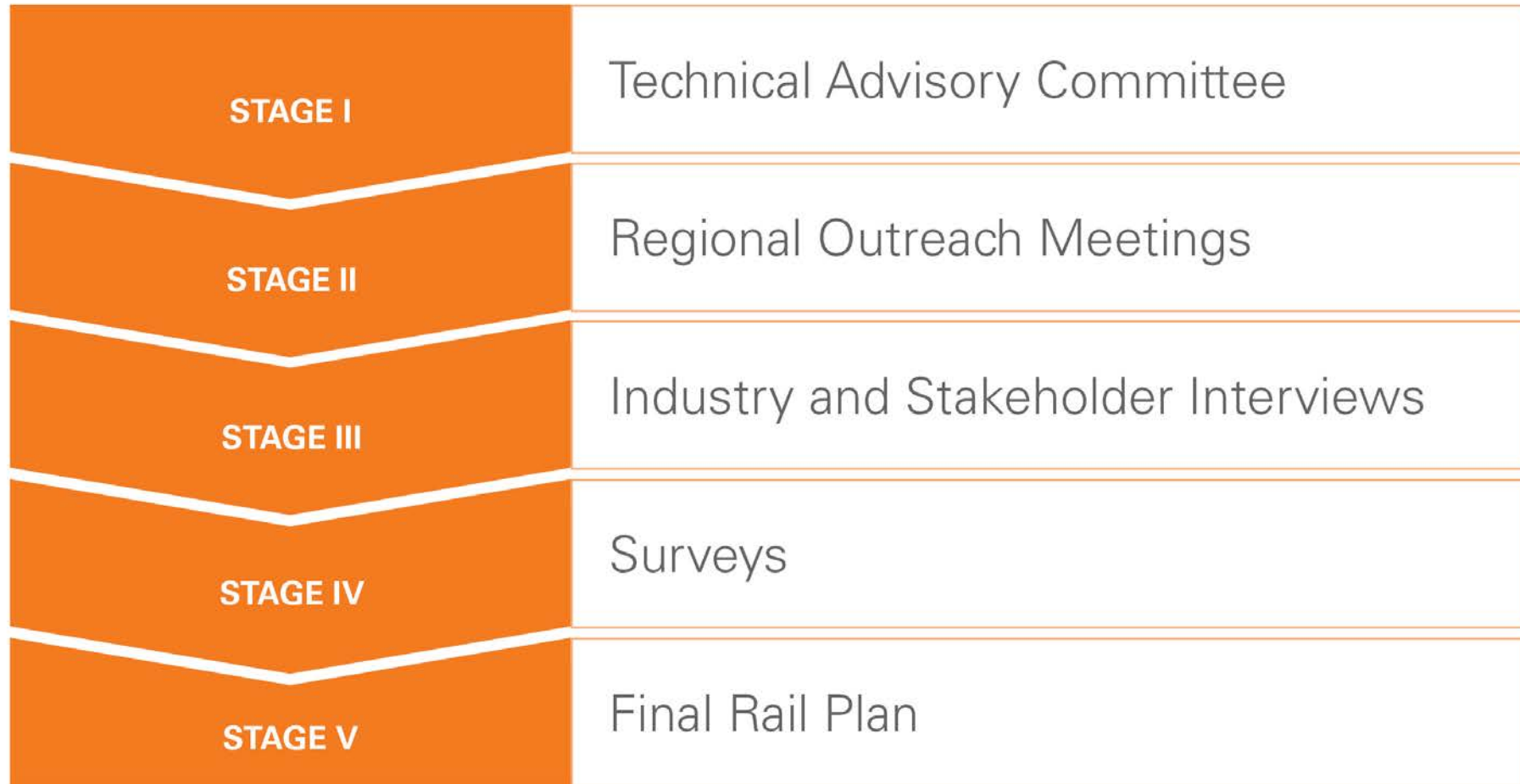


Stakeholder Outreach

- Railroads
- State and Regional Ports
- MPOs and RPOs
- Regional and Local Transit Agencies
- Airports
- Economic Development Agencies
- Industry



Stakeholder Outreach





Stakeholder Outreach- Key Questions

- Identify key regional transportation needs
- Identify needs that apply to the state's rail system
 - Transportation
 - Emergency management
 - Economic development
- Identify current rail project plans or proposals, including links to other modes



State Rail Plan Project Team



NCDOT

Eddie McFalls, PE
Strategic Initiatives Consultant
Pinecone Transportation Professionals
Rail Division
919.707.4727
ebmcfalls@ncdot.gov

Dewberry

Heather Wood
Regional Director
Ports & Intermodal
757.355.5815
hwood@dewberry.com



Dewberry

Rachel Vandenberg, PE
Senior Vice President
562.350.0567
rvandenberg@dewberry.com

Dewberry

Beth Smyre, PE
Associate
919.424.3771
esmyre@dewberry.com





NORTH CAROLINA

Department of Transportation



Rail Division Overview and Rail Plan Update

Jason Orthner, P.E.
Rail Division Director
jorthner@ncdot.gov
(919) 707-4714

Rachel Vandenberg, P.E.
SVP Ports and Intermodal
Dewberry
rvandenberg@dewberry.com
(562) 350-0567

Beth Smyre, P.E.
Associate, Senior Planner
Dewberry
esmyre@dewberry.com
(919) 424-3771